



Education of Community Paramedics in Alberta

What We Will Discuss

- Overview of Community Paramedicine in Alberta
- Education of Community Paramedics in Alberta





About Me

- Community Paramedic Manager
- Advanced Care Paramedic
- 14 years of Paramedic Experience
- Father of 2 and 5 Year Old



Overview of Community Paramedicine in Alberta



Education of Community Paramedics



Over 100
Practitioners

Serve Over 40+
Communities

Last year had
over 18,600
Patient Events

Three Distinct
“Teams”



Community Paramedic Teams

- Community Response Team (CRT)
- City Center Team (CCT)
- Crisis Response and EMS (CREMS)

Education of Community Paramedics



What Does our CP's Do?

- CVC & IV rehydration
- IV, SQ, IM, PO, PORT & PICC medication administration including IV antibiotics
- Specimen collection (blood, urine, wound)
- 70+ stocked medications
- Urinary catheterization
- Wound closure & care (i.e. sutures, adhesive dressings)
- Oxygen and nebulizer therapy
- Prescription facilitation
- Coordination of community services
- Observational and focused assessments
- Blood Transfusions
- Facilitated Diagnostic Imaging in community

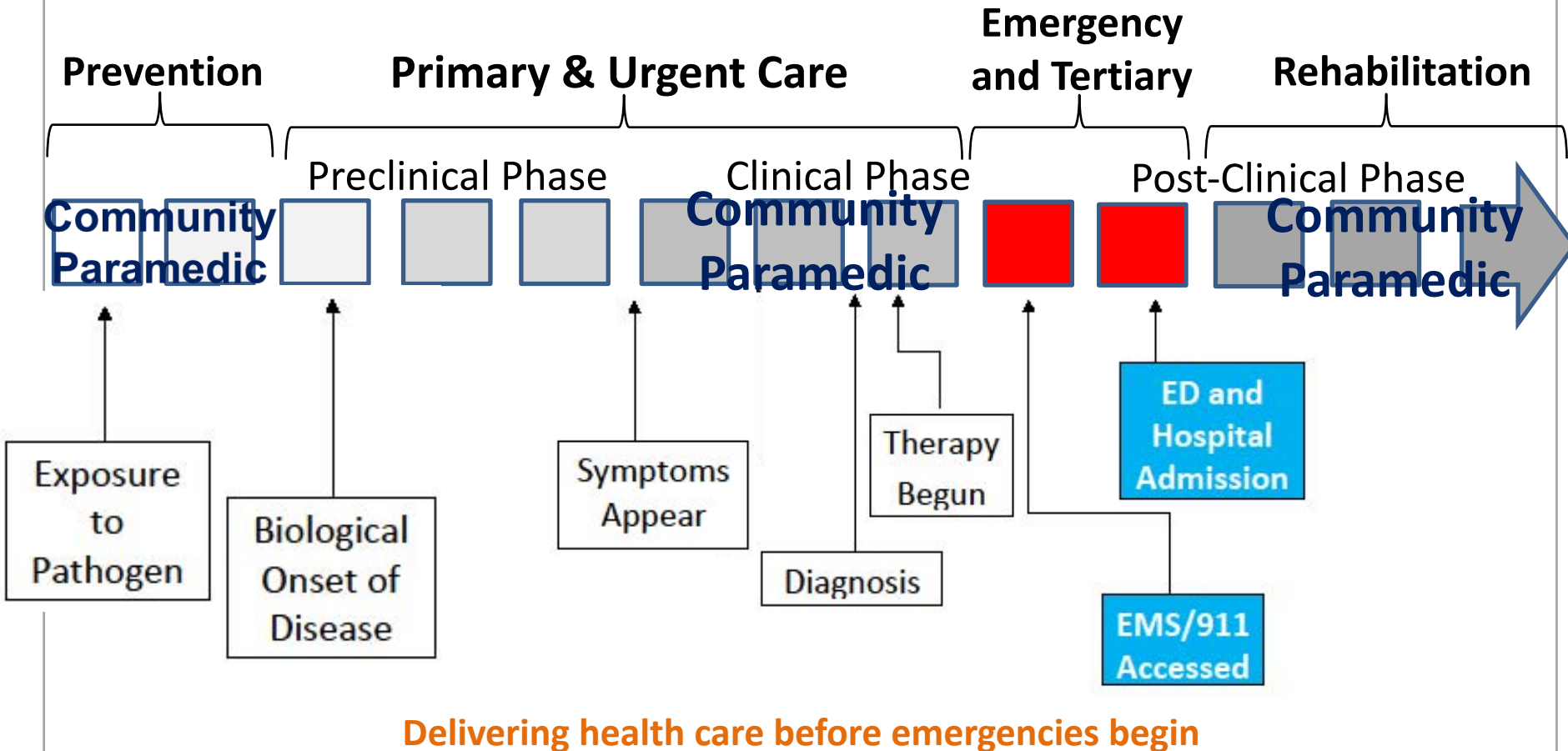


© Getty Images

Education of Community Paramedics



A Shift to Primary/Urgent Care



*BECOME
NINJA!*



How Do We Teach CPs?





Education Strategies

- Research Studies
- Employer Education
- Partnership with Educational Institution

Education of Community Paramedics



Educating Community Paramedics: A Grounded Theory Analysis

Kevin Lobay BSc, DMD, MD, MBA, FRCPC, Steven Amrhein ACP, BTEch, Jack Zhang M.Sc., PCP,
Joshua Bezanson, MD, MS, BJourn, ACP



Introduction

Community paramedicine has recently undergone a transformation in Alberta and shifted from a zone based operational structure to a provincial operational structure. This shift has allowed the harmonization of training for all AHS EMS community paramedics. To inform the development of curriculum and learning outcomes a grounded theory analysis of 20 interviews was conducted to determine the key areas of knowledge required to be a successful community paramedic. 20 subject matter experts including educators, community paramedics and operational leaders were interviewed. The results of these interviews were then compiled and eventually distilled into two "aggregate dimensions"

Methods

One hour semi-structured interviews were conducted with 20 subject matter experts in community paramedicine by the research team. The interview notes were then compiled into "first order concepts". These first order concepts were then synthesized into "second order themes" and "aggregate dimensions".

First Order Concepts

<i>enhanced medical knowledge</i>	<i>offer specific therapies</i>
<i>strong clinical decision-making skills</i>	<i>enhanced assessment and diagnostic skills</i>
<i>relationship-building</i>	<i>multidisciplinary collaboration</i>
<i>health system navigation</i>	<i>preventive healthcare</i>
<i>facilitate access to care</i>	<i>ensure quality care</i>
<i>formal training component</i>	<i>continuing education</i>
<i>trainers from multiple healthcare disciplines</i>	<i>information management training</i>
<i>accreditation consistent with unique scope of practice and patient population</i>	



Second Order Themes

<i>medical expert</i>	<i>communicator</i>
<i>collaborator</i>	<i>leader</i>
<i>health advocate</i>	<i>scholar</i>
<i>professional</i>	



Aggregate Dimensions

<i>defining core community paramedic competencies</i>	<i>Interfacing with others</i>
---	--------------------------------

Select Quotes

"CPs need a broad education in applied pharmacology such as the actual medications being used and their groups; for example: this is a macrolide, and this is generally how it works."

"Family docs are basing their plan on our assessment over the phone without seeing the patient. Confidence in our assessment is important to them."

"Laboratory test indications, interpretation, and actions when values are critical."

"Skills training would include PICC lines and ports, suprapubic caths, G-tubes, phlebotomy, possibly blood product administration, suturing and wound closure, wound care."

"Compassion and how to have a "hard" conversation; to talk a family and patient through the last stages of life and the dying process."

Conclusion

CPs require a very broad skillset if they are to meet the healthcare needs of their patients in the community. To do this CPs need to work with regulators and educators to further define CP practice to become highly skilled at collaborating with other members of the healthcare team.



Educating Community Paramedics: A Grounded Theory Analysis

Lead by a team of Physicians,
Medical Students and CP Leadership

To Determine Educational Needs of
Community Paramedics



Interviewed 20 experts

i.e. Community Paramedics, Regulators, Managers

Results identified core competencies of community paramedics identified by various stakeholders

Used these findings to inform education of CP in Alberta

Employer Education



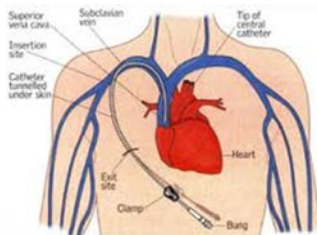


Employer Education

- New Staff Curriculum
- Continuing Education Program
- Developing a “community of practice”
- Based Upon Ongoing Staff Feedback

In Class Training

- Central Venous Catheter & PICC Access
- Sutures, Staples, Specialized Wound Care
- Advanced Pharmacology
- Dementia, Delirium and Depression
- Social Determinates of Health
- Palliative Medicine





Clinical Rotation

- PICC & PORT Training
- ED Rotations
- On Car Mentorship
- Simulations and Shadow Shifts on Hospital Units





Continuing Education

- Either Staff or Management Initiated simulation, skills or new clinical topics
- Required Monthly Education Topics and Skill Review



Educational Institutions



[APPLY](#) [MYMRU](#) [Q](#)

[Prospective Students](#) | [Current Students](#) | [International Students](#) | [Indigenous Mount Royal](#) | [Alumni](#)

[PROGRAMS & COURSES](#) ▾ [ABOUT](#) ▾ [ADMISSION](#) ▾ [ACADEMIC SUPPORT](#) ▾ [CAMPUS SERVICES](#) ▾ [LIBRARY](#) ▾ [RESEARCH](#) ▾ [EMPLOYMENT & CAREERS](#) ▾

Community & Health

You are here: [Home](#) > [Programs & Courses](#) > [Continuing Education](#) > [Community & Health](#) > [Community Paramedicine Extension](#)

Continuing Education Home

- ▶ [Community & Health](#)
- ▶ [Addiction Studies](#)
- ▶ [Birth Doula](#)
- ▶ [Book a Massage](#)
- ▶ [Child & Youth Human Rights](#)
- ▶ [Children's Mental Health](#)
- ▶ [Conflict Resolution](#)
- ▶ [Dementia Programs](#)
- ▶ [Integrative Health Coach](#)
- ▶ [Medical Terminology](#)
- ▶ [Nursing Programs](#)
- ▶ [Occupational Health & Safety](#)
- ▶ [Parenting After Separation](#)
- ▶ [Police Studies](#)
- ▶ [Reiki](#)
- ▶ [Universal Design](#)
- ▶ [Yoga Therapy](#)

Community Paramedicine Extension Certificate - NEW



[Benefits](#) | [Program details](#) | [Entrance requirements](#) | [Courses & fees](#)

This program builds on current paramedic training and experience by



CP Extension Certificate

- MRU Program Developed in 2018
- Developed in Close consultation with Alberta CP program
- Delivered over two years
- Agreement to provide practicum sites



CP Certificate Program

Required courses

Community Paramedicine Overview

Advanced Anatomy, Physiology and Pharmacology

Diversity, Communications and Ethics

Seniors' Health

Professional Practice in Seniors' Health

Advanced Topics in Mental Health and Addiction

Professional Practice in Mental Health and Addiction

Team Approaches to Chronic Disease Management

A Palliative Approach for Individuals and Families

Professional Practice in Community Paramedicine

Built partnerships to access Harvey Sim
for advanced assessment training with
various medical schools





Thank You

© Randy Glasbergen / glasbergen.com



**"Where do I see myself in 15 years?
I wish you wouldn't ask that!"**

steven.amrhein@ahs.ca