

Ruptured varicose veins, Colles fractures, and skin tears: can you connect the dots?



Giulio Novarese MD, PhD
Clinical Director Sam Medical
Giulio.Novarese@SamMedical.com

What is the meaning of non conventional?

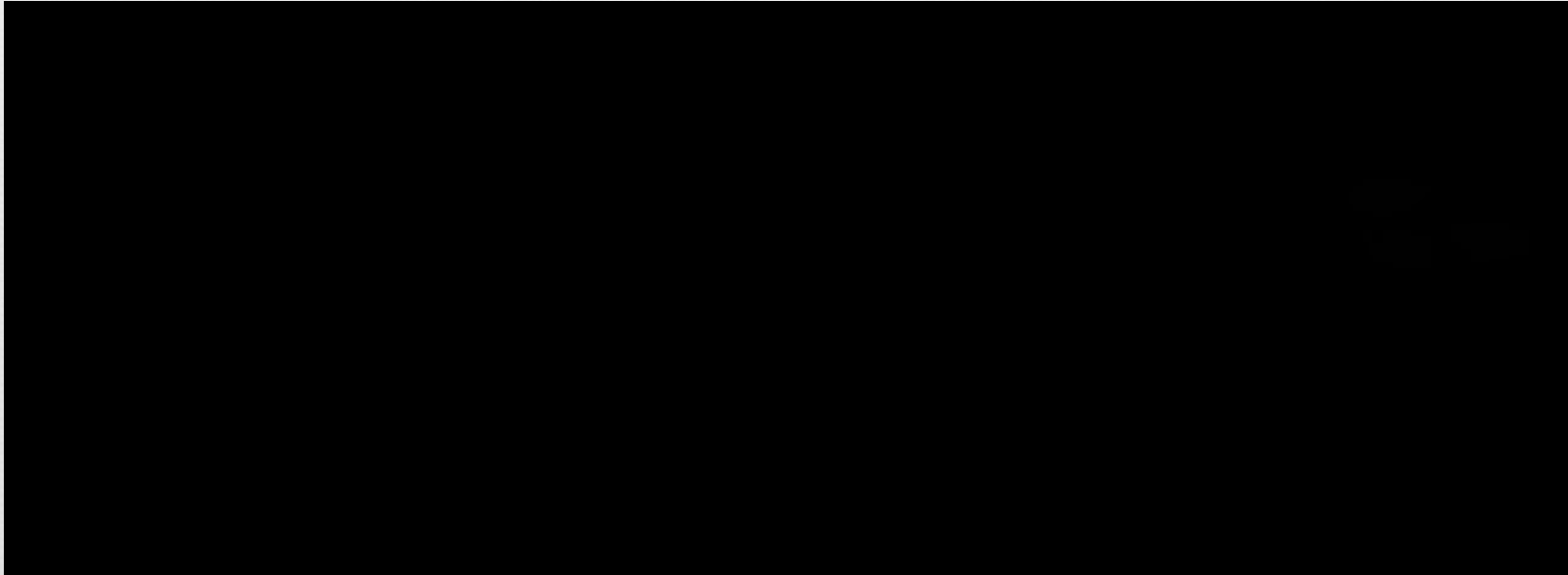


What is non-conventional? Not conventional: not conforming to convention, custom, tradition or usual practice: unconventional non conventional teaching methods. What is non-conventional thinking?



Having always a Plan B ready

Plan B



Bleeders



Big Bleeders-Small Bleeders





Sam XT versus Cat TQ



Varicose Vein








Epistaxis




- ❧ **Anterior Epistaxis:** Starts in the front of the nose on the lower part of the septum. Capillaries and small blood vessels in this front area of the nose are fragile and can easily break and bleed. This is the most common type of nosebleed.
- ❧ **Posterior Epistaxis:** Occurs deep inside the nose. This nosebleed is caused by a bleed in larger blood vessels in the back part of the nose near the throat. This can be a more serious nosebleed and it can result in heavy bleeding.

Who gets nosebleeds?

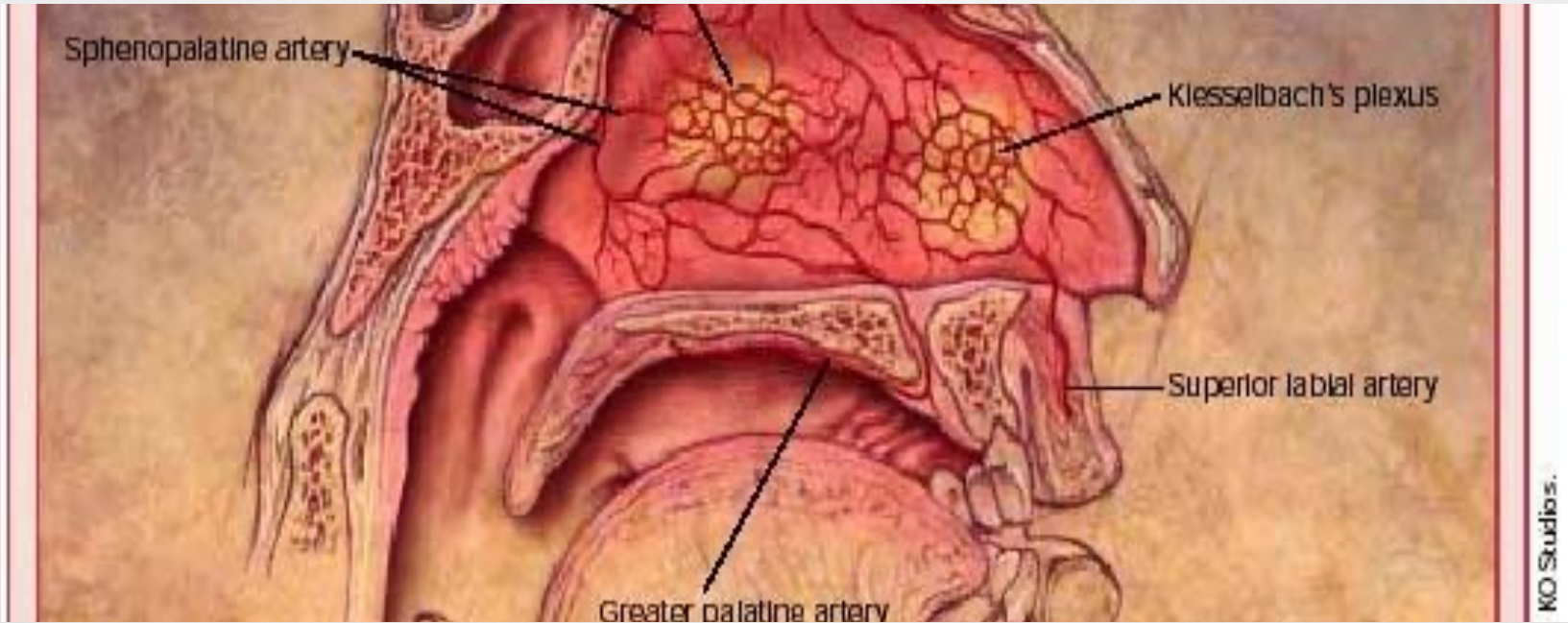
- 
- ❧ Children between ages 2 and 10 (dry air, colds, allergies and stiking fingers and objects into their nose).
 - ❧ Adults between ages 45 and 65 blood make take longer to clot in mid life-older adults. They are also more likely to be taking blood thinning drugs (daily aspirin use) have high blood pressure, atherosclerosis or a bleeding disorder.
 - ❧ Pregnant women. Blood vessels in the nose expand while pregnant, which puts more pressure on the delicate blood vessels in the lining of the nose.
 - ❧ People who take blood-thinning drugs such as aspirin or warfarin or people who have blood clotting disorders, such as hemophilia or von Willebrand disease.

D1 D



 **HO LEE SHIT**
 **FOO KIN FAST**

A little bit of Anatomy





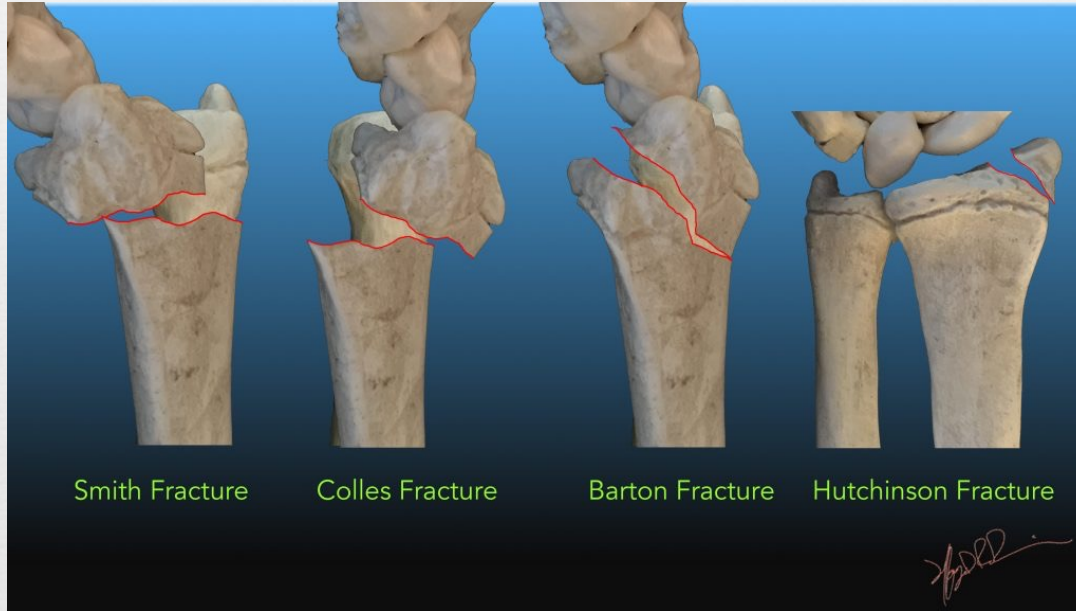


NOTICE!

For your own safety!

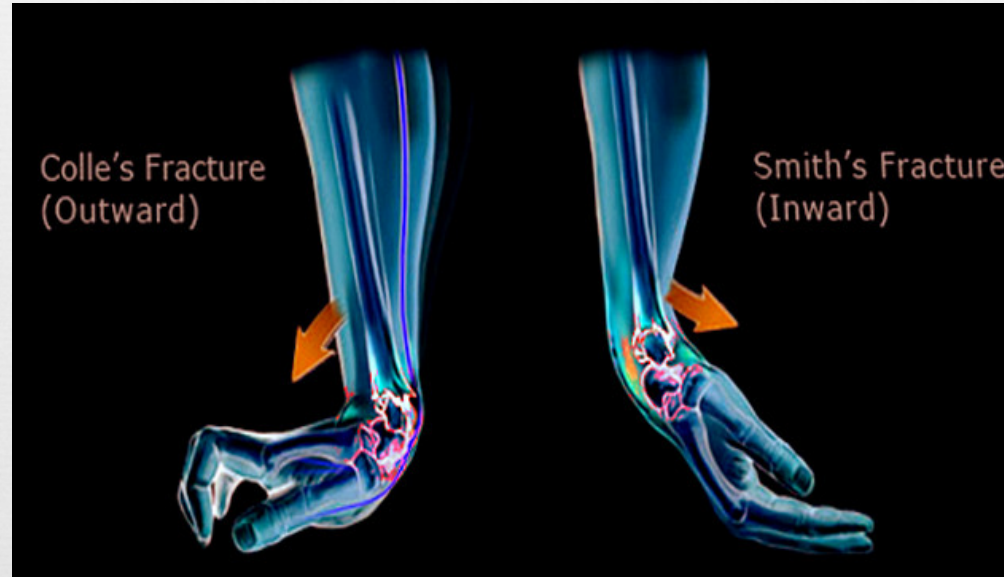
Please, Do Not Feed
The Paramedics!

Common Distal Radial Fractures





- ❧ Smith Fracture: Volar displacement, extra-articular
- ❧ Colles Fracture: Dorsal displacement, extra-articular
- ❧ Barton Fracture: Dorsal displacement, intra-articular
- ❧ Hutchinson Fracture: Radial styloid



Splint, splint, splint



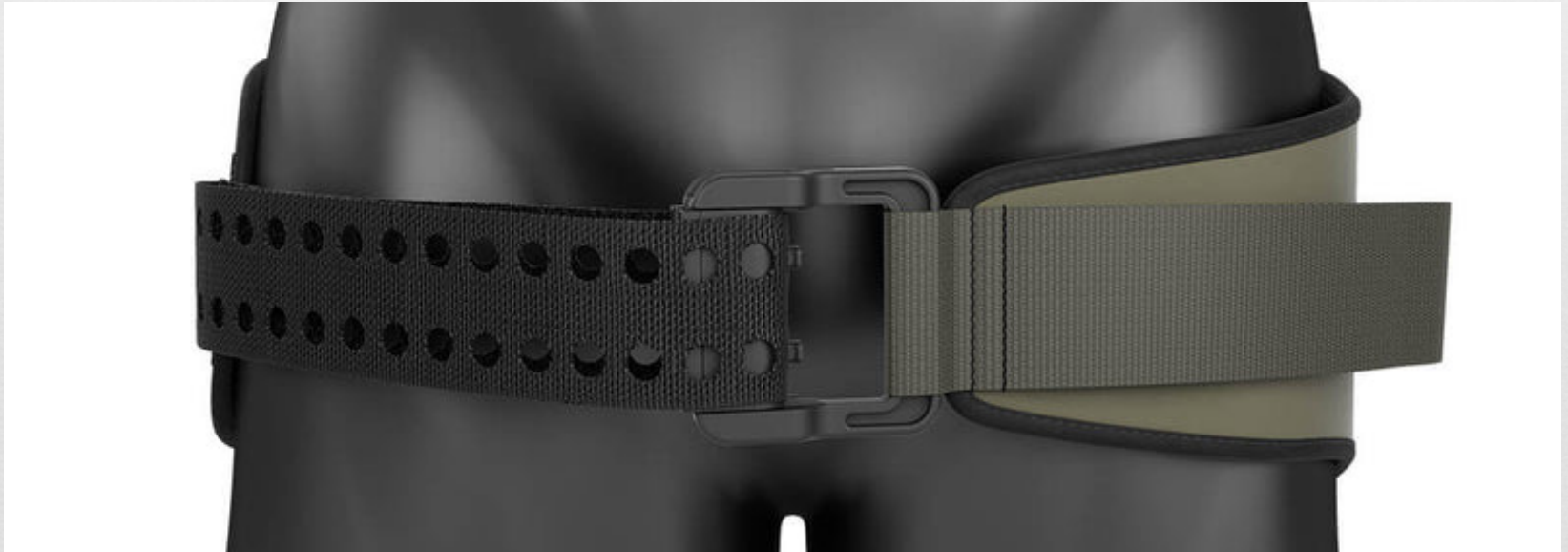
Sam's Splint



Sam's Pelvic Sling SP2



Connect the dots.....



Questions? Answers?



THANK YOU!

