

Authentic Simulation via Inter-Professional Learning

Duncan McConnell

Paramedicine Program Director

School of Medicine – Griffith University – Australia





Australia – The Land Down Under

How we welcome our visitors



National Icons



DROP BEAR FACTS:

1. A fully grown Australian Drop Bear can fit an adult human's head inside its mouth.
2. Drop Bears can drop from heights as high as 45 metres, which allows them to hit their prey at 104 kilometres per hour.



Our Location – Gold Coast, Queensland



A little about me



- Program Director
- 21st year working with Queensland Ambulance Service
- Active ACP - Part-time
- Active CP – Part-time
- Research Interests
 - Simulation / Inter-Professional Learning
 - Internationalisation of Paramedic Education and Services



2018 - 2

National
Registration Starts

2018 - 1

July – First Cohort
Graduates

2016

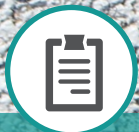
First Cohort of
students start

2015

CAA Approval, Staff
Appointments

2014

Development of
the Degree



Year 1

Foundational
Year

Basic &
Foundation
Paramedic Skills



Year 2

Rubber hits the
Road

Advanced Skills
and
Management



Year 3

Final Year

Future direction
of Paramedicine
and Capstone

Mid-Year Exit

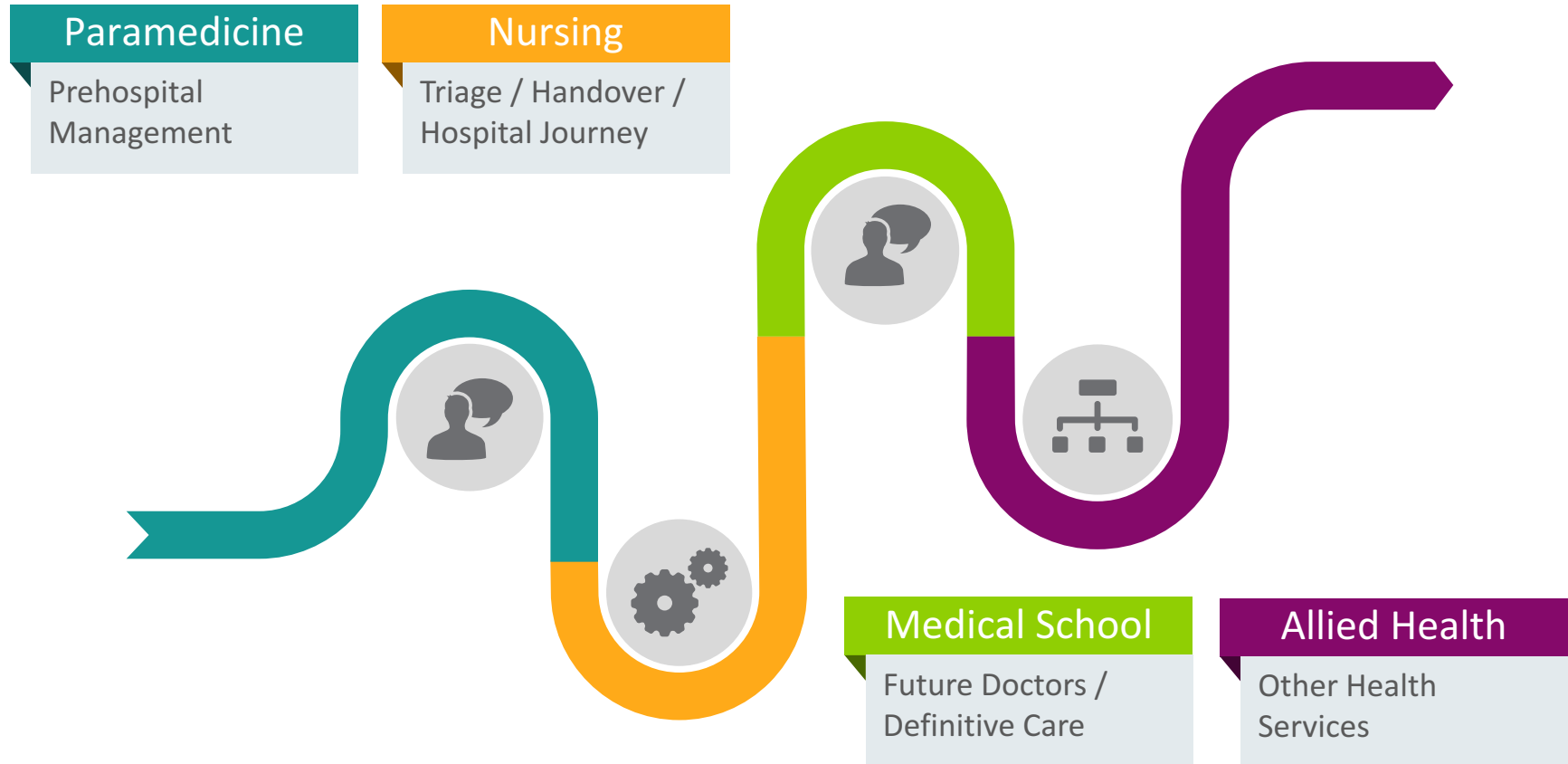


Grad Year

Australia – 1 Yr
FT with an
Ambulance
Service

Overseas –
Depends on
location

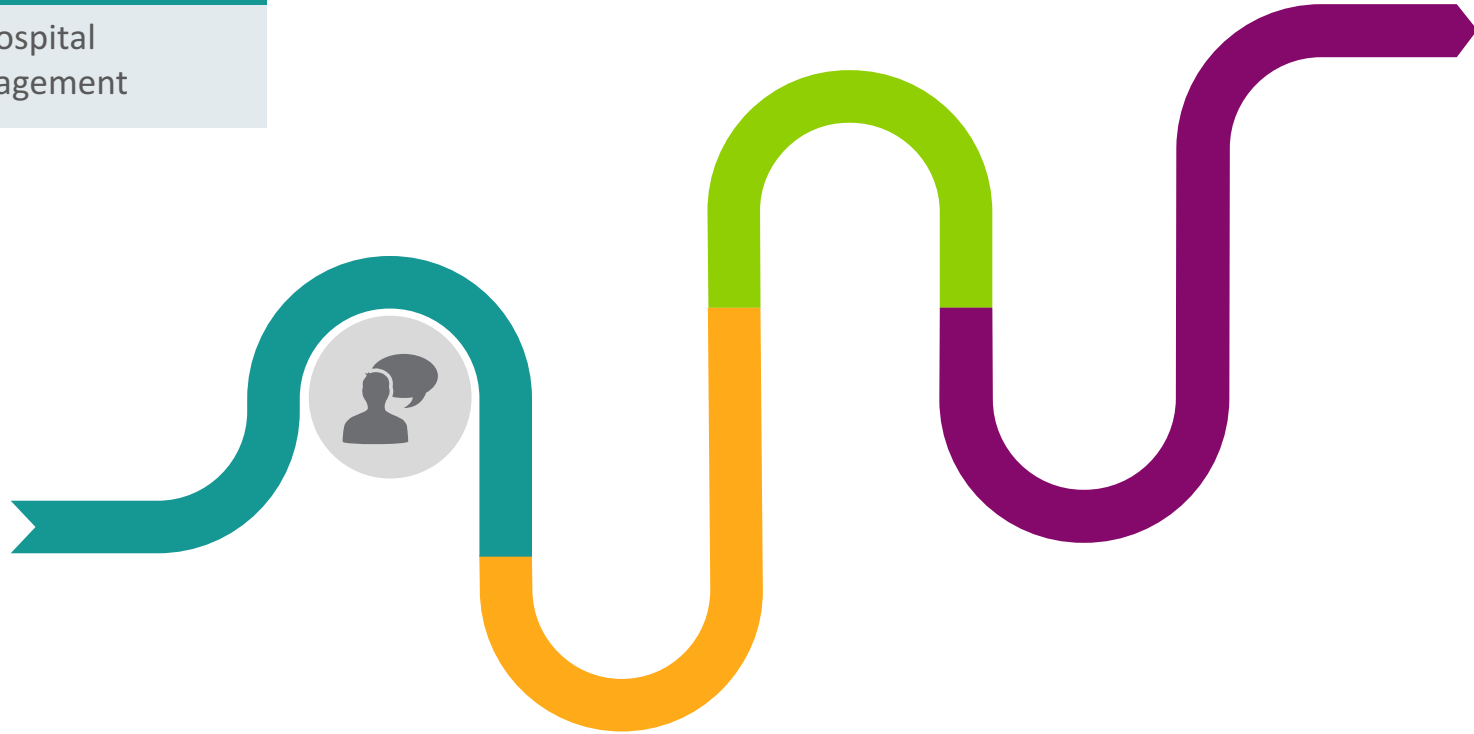
Inter-Professional Learning within the Health Group



Beginning the Simulation Journey - Paramedicine

Paramedicine

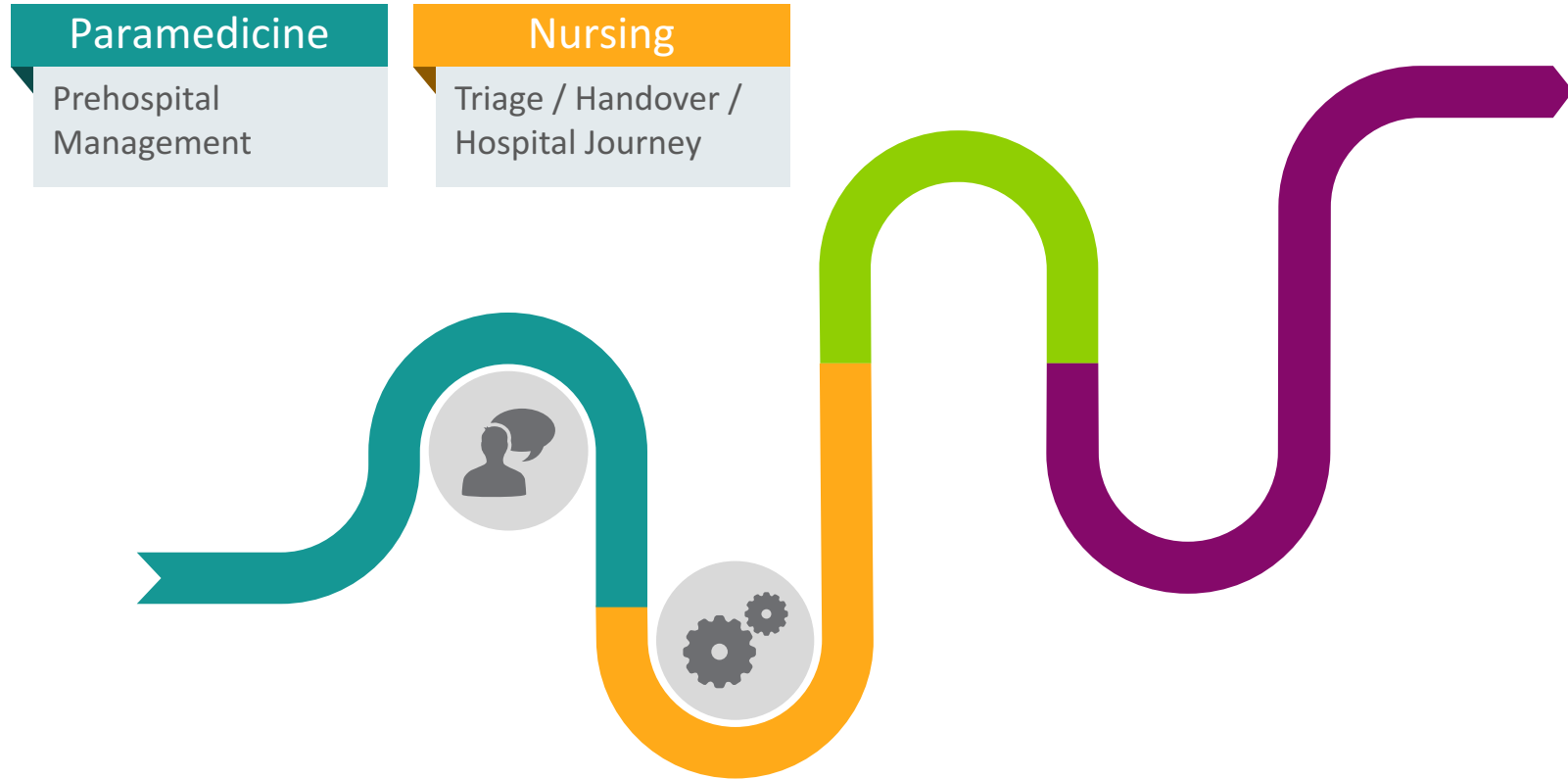
Prehospital
Management

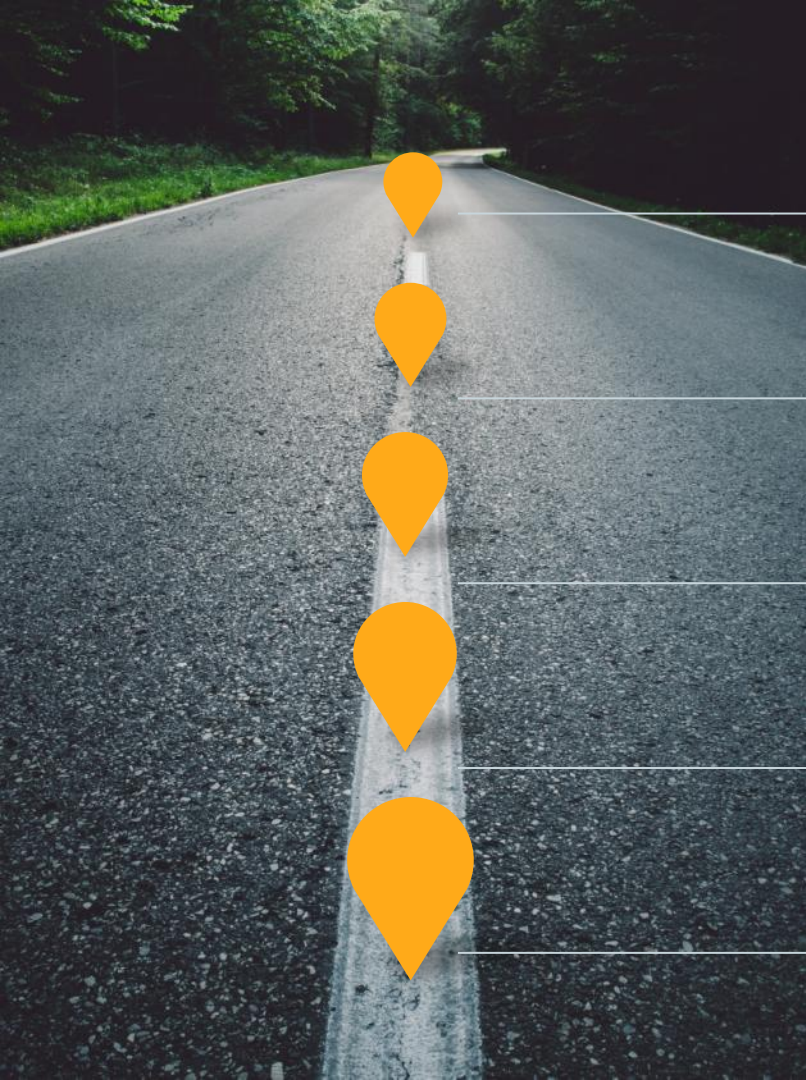


Beginning the Simulation Journey - Paramedicine



Inter-Professional Continues with Nursing





Step 5

Final handover of clinical documents between Nursing & Paramedic Students

Step 4

Paramedicine Student completes required ePCR for patient

Step 3

Nursing Student completes required documentation

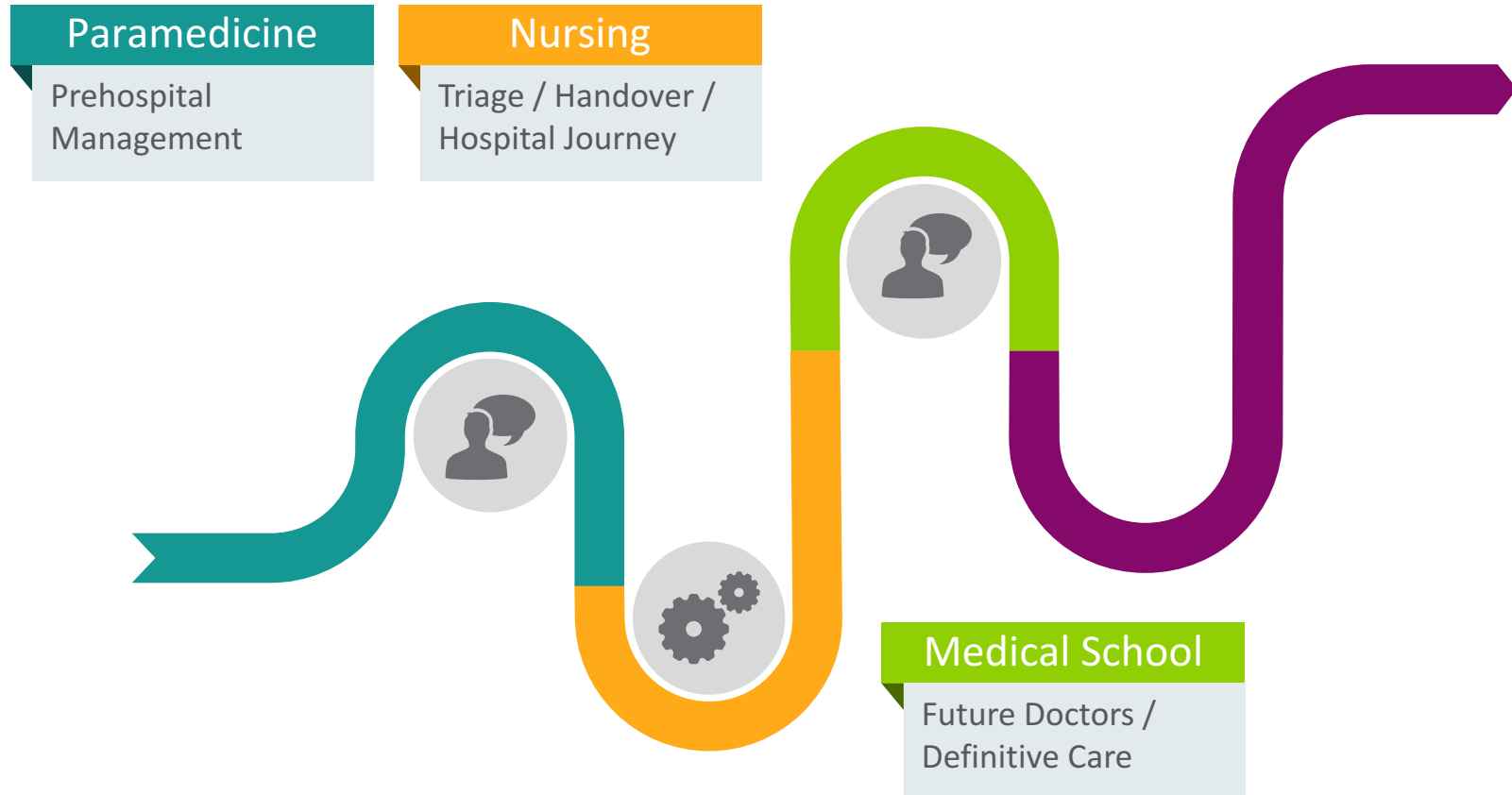
Step 2

Clarification of Patient Handover between Nursing & Paramedic Students

Step 1

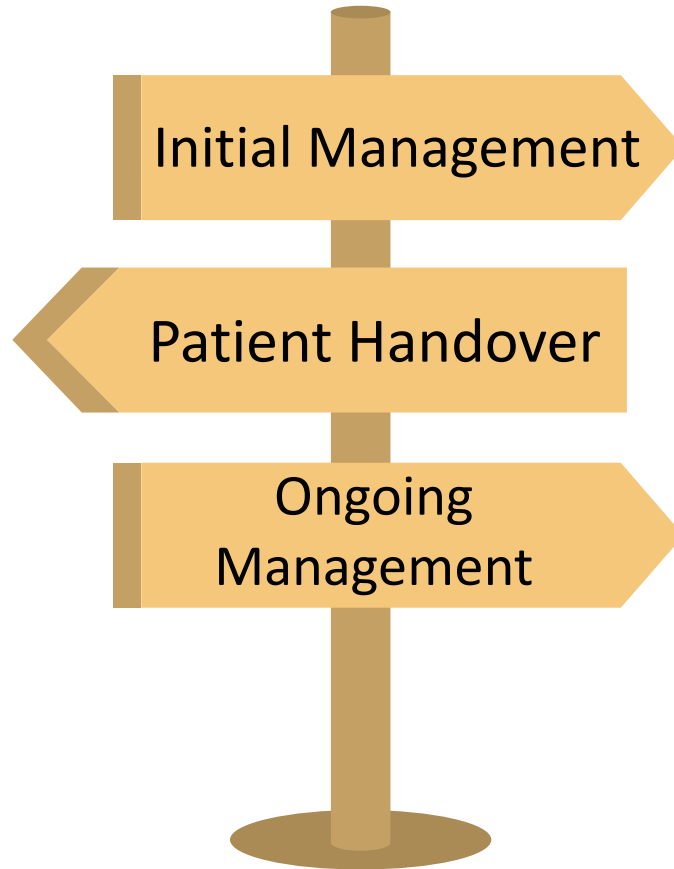
Patient Handover begins

Inter-Professional Journey Continues with the Medical School



Triage Handover

Nursing student
hands over to
Medical Student /
Student Doctor Team

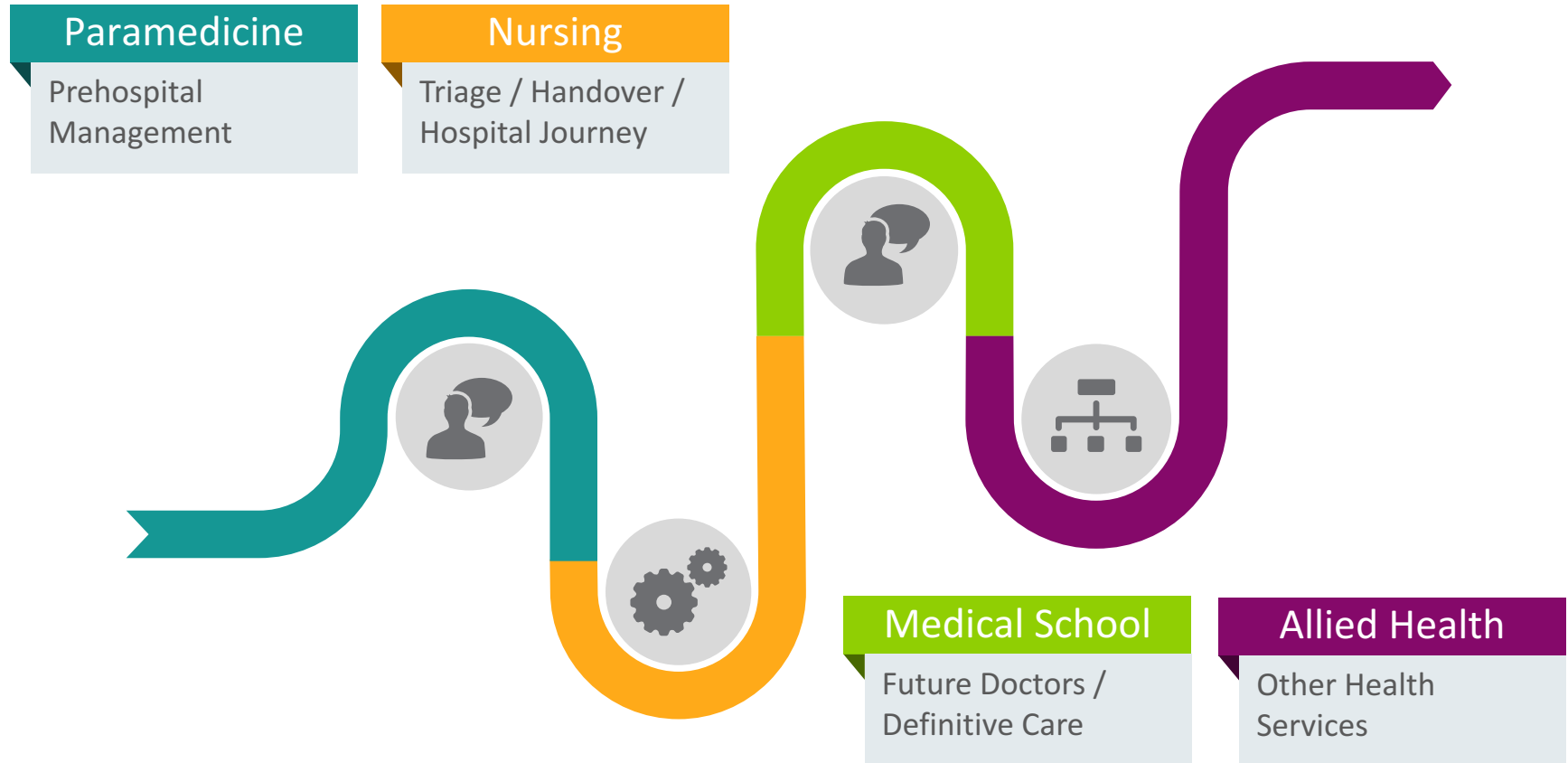


Hospital Management of Patient

Medical Students
process patient from
ED and move them
to the Ward

The Medical Student
Doctor will then
rotate / take turns at
various roles for this
patient

Inter-Professional Simulation Journey Concludes





Authentic Techniques - Paramedicine



Immersive Environments



ePCRs, Telemetry, Radio Communications

Record # 6

Quick Entry Paper Form Crew Roles

Home

Start Here

Incident

Patient

Health

Assess

Treat

Dropoff

Review Submit

QA Comments: (Administrator Use Only)

Review Requested? NO Reportable Conditions Present? YES Non-Billable? NO

Date/Time of PSAP Contact 10-05-2017 07:00 CAD # Unit # 01 Crew Duncan McConnell

Complaint Reported by Dispatch* Back Pain (Non-Traumatic) EMD Performed No Type of Service Requested* 911 Response (S) 01 EMS Agency # 925

Assigned* 07:10 Enroute On-Scene PT Contact Left Scene At Dest Other EMS Trans Available* Loaded Miles 0.0

Call Location Apt/Ste/Rm# Pick-Up Odo Drop-Off Odo

City State ZIP Code CA Response Mode* Emergent Downgraded Call Type (Unit's Level of Care)* ALS-Paramedic

Responding From (Dispatch Location) Incident Location Type Incident Zone # Patients at Scene Single

MCI Incident? Patient Disposition* Patient Evaluated, No Treatment/Transport Required Primary Role of Unit* Ground Transport

First On-Scene? Intent of Injury Work-Related Injury

Other Agencies at the Scene - Name Other Agency ID Other Agency Type

Last Name First Name MI Suffix Weight Weight Units Gender LB KG

Tools Documents

12:48:38

ePCRs, Telemetry, Radio Communications

At the Emergency Site:

The prehospital personnel arrives on the scene and performs a first examination of the patient. To make better decisions, the medical data collected on-site with corpuls[®] are streamed to clinical specialists.

- Transmission of D-ECGs, events and patient data
- Transmission of all curves and vital parameters



The Receiving Specialist:

The specialist is able to get a first overview of the emergency situation with any end device connected to the internet in hospital or at any other location.

- Assessment and diagnosis of patient data by using the corpuls.web interface
- Transfer of collected data to specialists and ECG-archiving systems



The Advantages:

Important information is transmitted to the hospital even before the arrival of the patient.

Already at this point of time necessary precautions can be taken.

- Economic management of resources
- Improvement of patient care



ePCRs, Telemetry, Radio Communications



Agency Collaboration

••••• Virgin 20:37 48%

< Tweet +

 **Dr Stephen Rashford**
@QASMedDirector

Griffith Uni's @QldAmbulance full motion ambulance simulator will be an amazing asset for sim training. Looking forward to joint training.



3/7/17, 19:54





Thank-you

Any Questions?

