

# Community Paramedicine IRCP Presentation

---

May 24, 2023



# Land Acknowledgement

---

We would like to acknowledge that today we are coming together from a number of ancestral, traditional, and unceded territories.

We would like to acknowledge these homelands and recognize with respect the Indigenous peoples, humbly acknowledging them as the traditional stewards of the lands that we have the privilege to live work, and play on.



# Presentation Roadmap

- Community Paramedicine in BC
- Orientation, Registry and Roles
- Services and Demographics
- 911 CP Impacts and Challenges



# British Columbia

---

**944,735 square Kilometers**  
**5.4 million people**  
**in 680 communities**  
**and 204 Indigenous nations**

**BC Emergency Health Services**  
**~556,000 911 calls a year**



# Community Paramedicine



- Primary Care Paramedic
- Advanced Care Paramedic
- Part-time
- Full-time



# Program Roll Out

**Trial Phase**  
9 prototype  
communities

**2015**

**Roll-out**  
76 communities  
across the  
province

**2015 -2018**

**Expansion**  
14 more  
communities,  
ALS and Full-  
Time

**2018**

**Review**  
CP Impact on  
Quality-of-life  
indicators and  
911 Volumes

**2019**

**Scheduled On-  
Call**  
CPs increased  
to 165 in 100  
communities

**2021**

**Urban CP**  
Partnered with  
McMaster  
University to  
trial CP@Clinic

**2021 (Dec)**

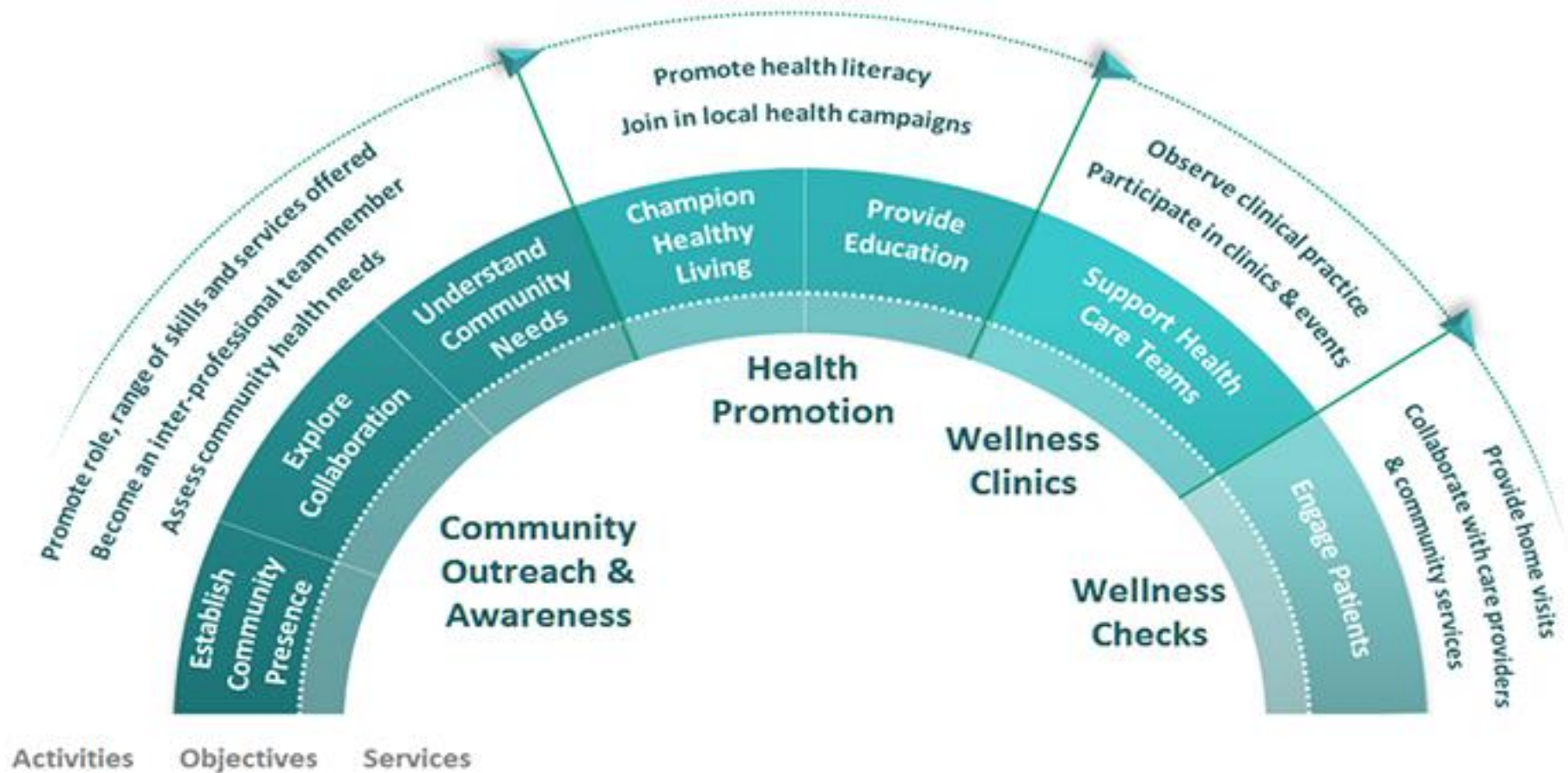


**BCEHS**

BC Emergency  
Health Services



# Four Pillar Approach





# Orientation, Registry & Roles



# Orientation to Practice & Probation

---

CP Activities 6 months+



CP Orientation and face to face workshop



Community Orientation & Service Delivery



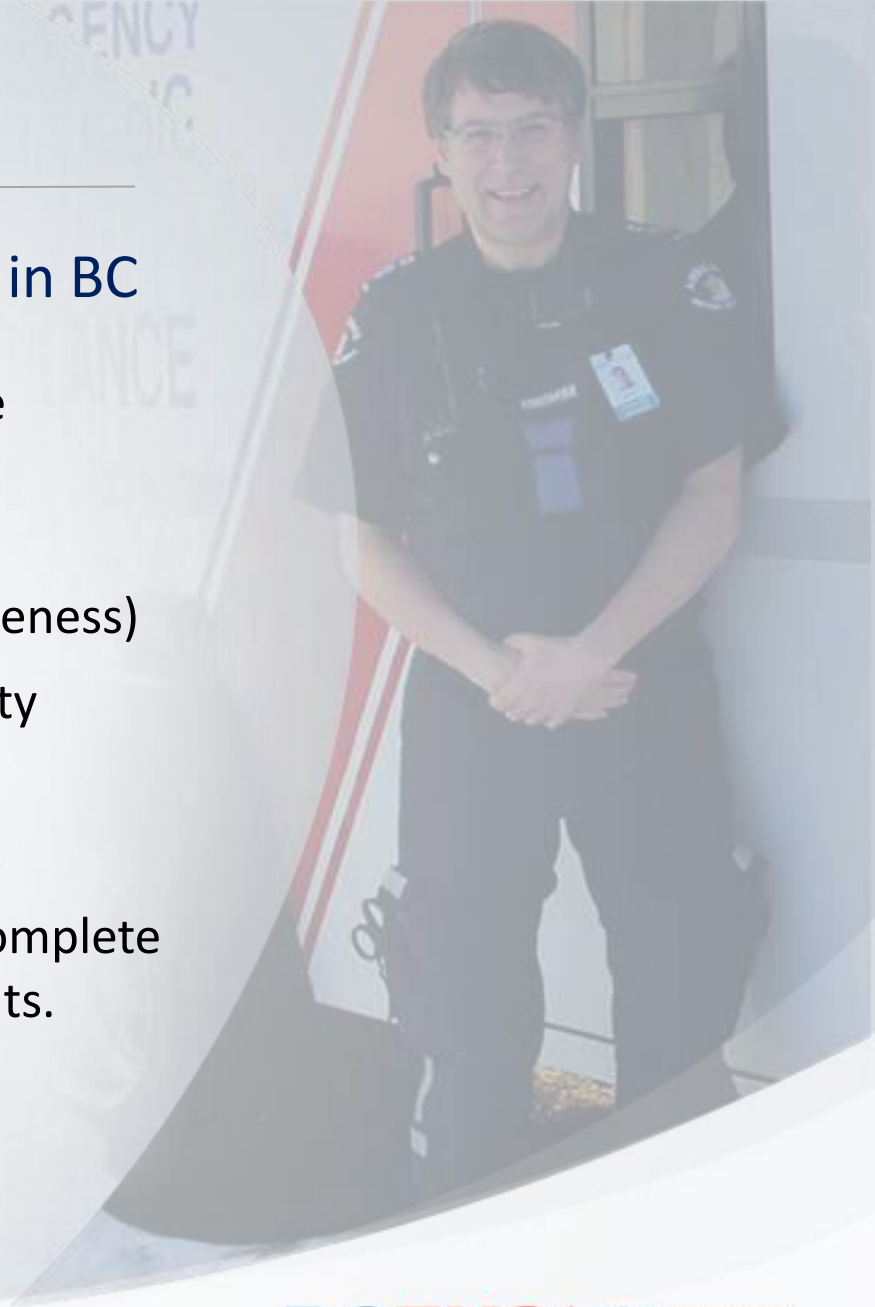
Preparation & Progression to Registry

# CP Registry

---

## Paramedics qualified to work as a CP in BC

1. Complete the CP Orientation to Practice Program
2. Demonstrate they have established a community presence (Community Awareness)
3. Coordinate and participate in Community Outreach
4. Complete job shadowing; and
5. Demonstrate they can independently complete all aspects of wellness checks/home visits.



# Services & Demographics





# Services Delivered



**6,047**  
Patients



**108,125**  
Pre-scheduled  
Patient Visits



**3,344**  
911 Response Re-  
directs\*



# Services Delivered

---



**6,139**  
Community  
Clinics

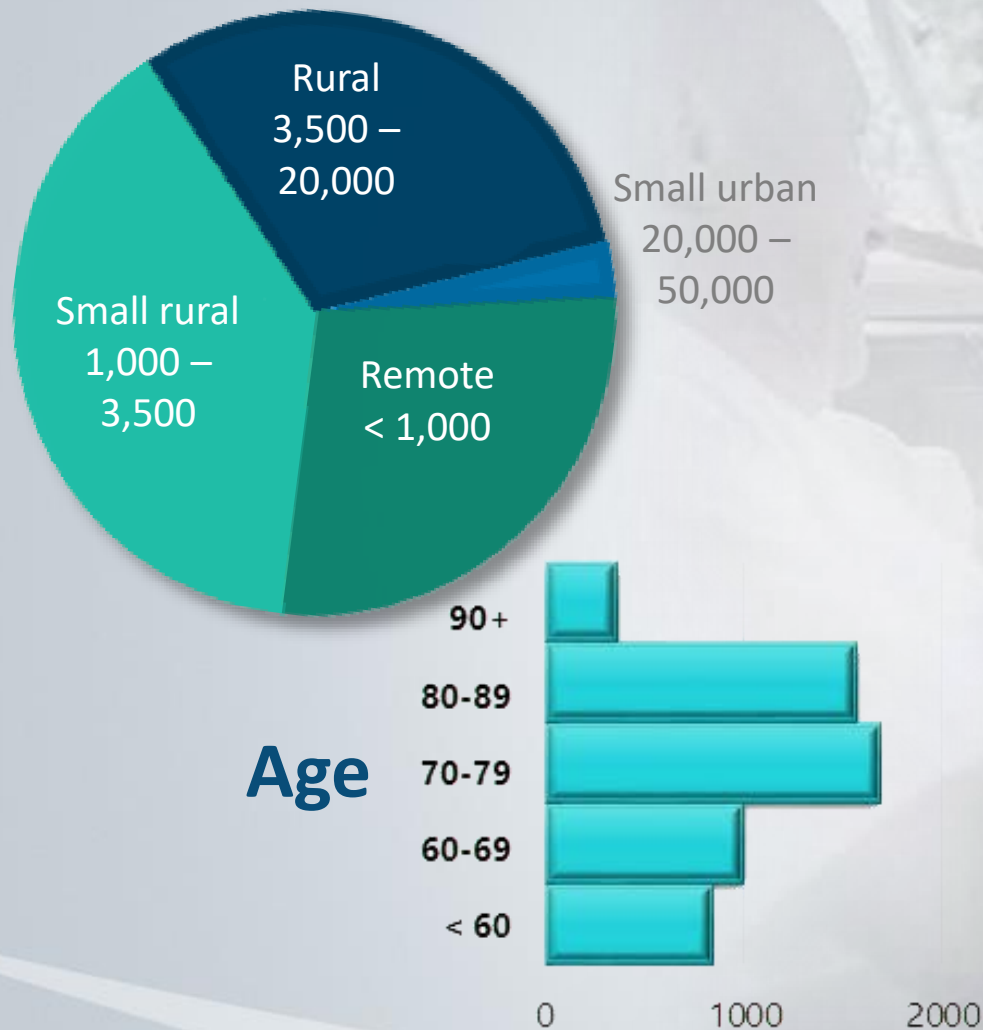


**29,629**  
Community  
Engagements

Source:  
BCEHS, Jan 2016 to Dec 31 2022



# Community Population

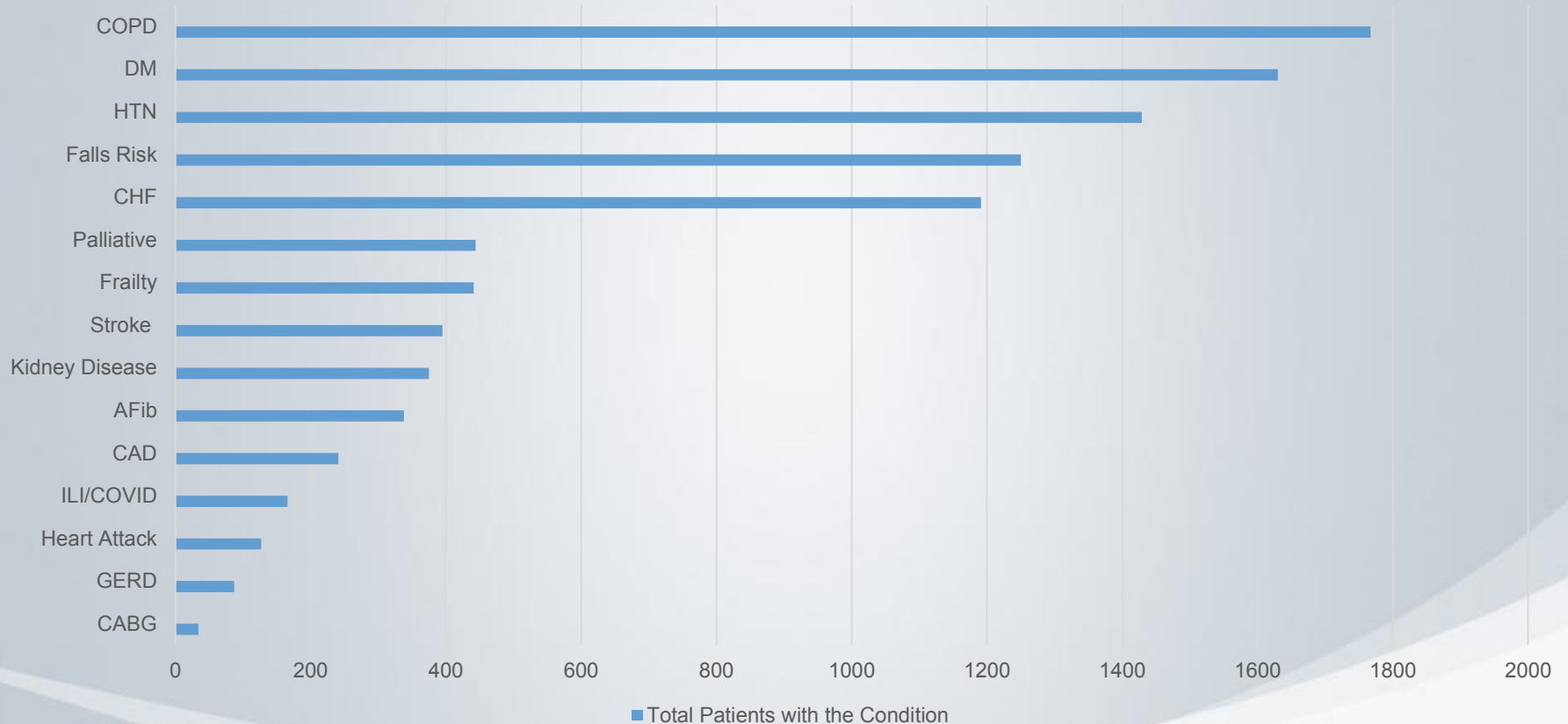




# Client Breakdown

## Pre-Scheduled Referrals

CP Referrals by Medical Condition

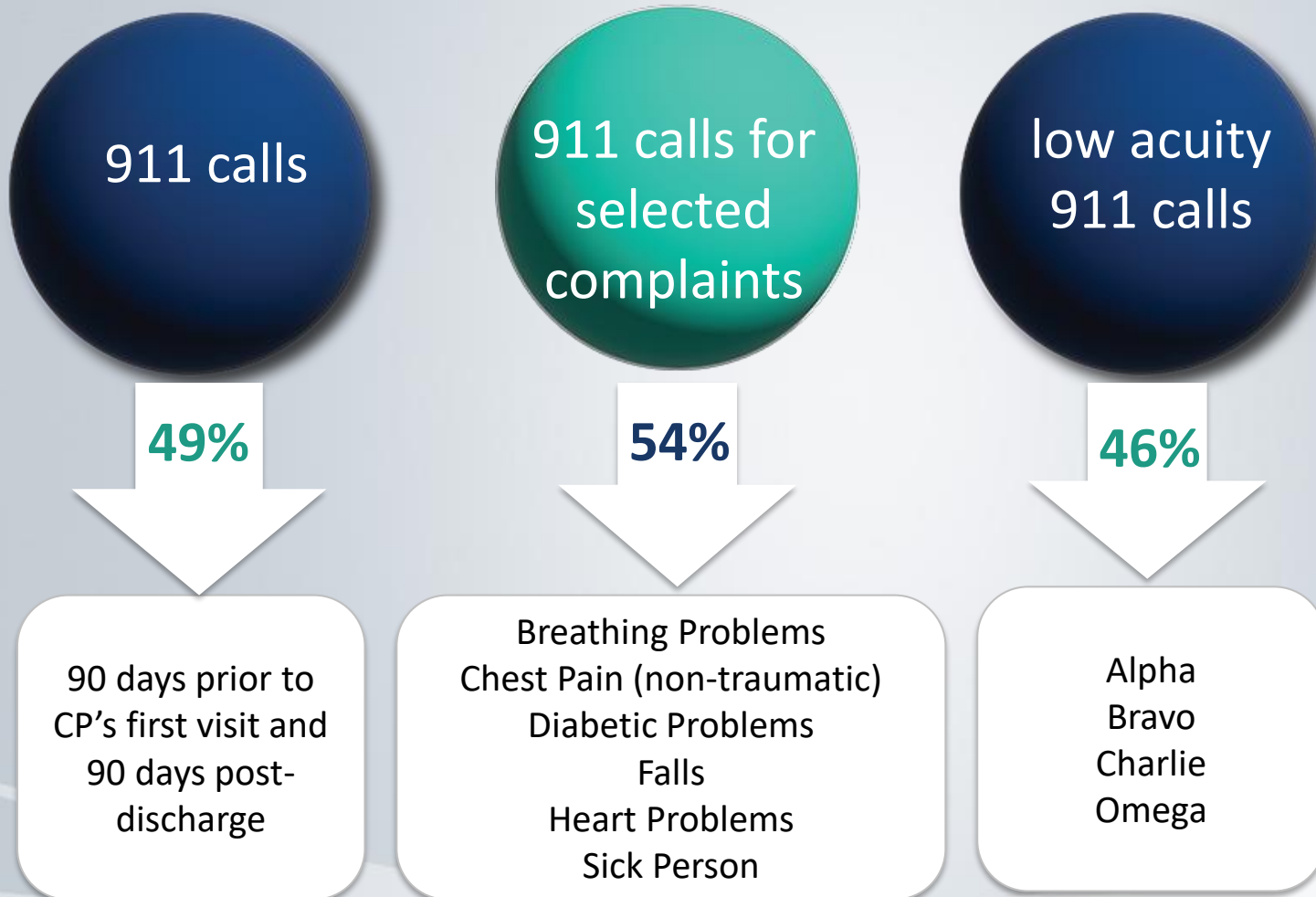


# 911 | CP Impacts and Challenges



# 911 Study

## Community Paramedicine Impact on 911 Calls





# Scheduled On-Call

---

- Consists of three 24hr shifts made up of 8 mandatory station hours and 16 on-call hours
- Increased CP Staffing throughout the province
- Provided better community coverage for emergency events and CP resources
- Decreased reliance on pager pay and improved access to a living wage

# Scheduled On-Call

---

## SOC Impacts



Time Out  
Issues



Poor Work Life  
Balance



CP 911  
Integration

**\*\*As a result of a new Collective Agreement, Scheduled On-Call will be phased out by March 31, 2024**

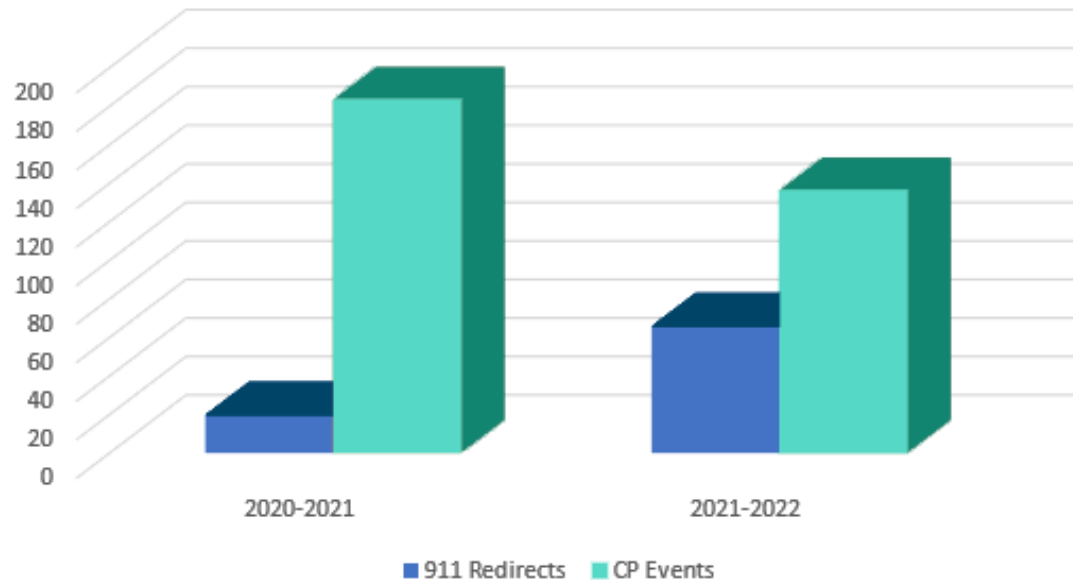
# 911 Integration

## Impacts to Community Paramedicine

911 Call  
volume  
and  
response

CP  
Events &  
Engagement

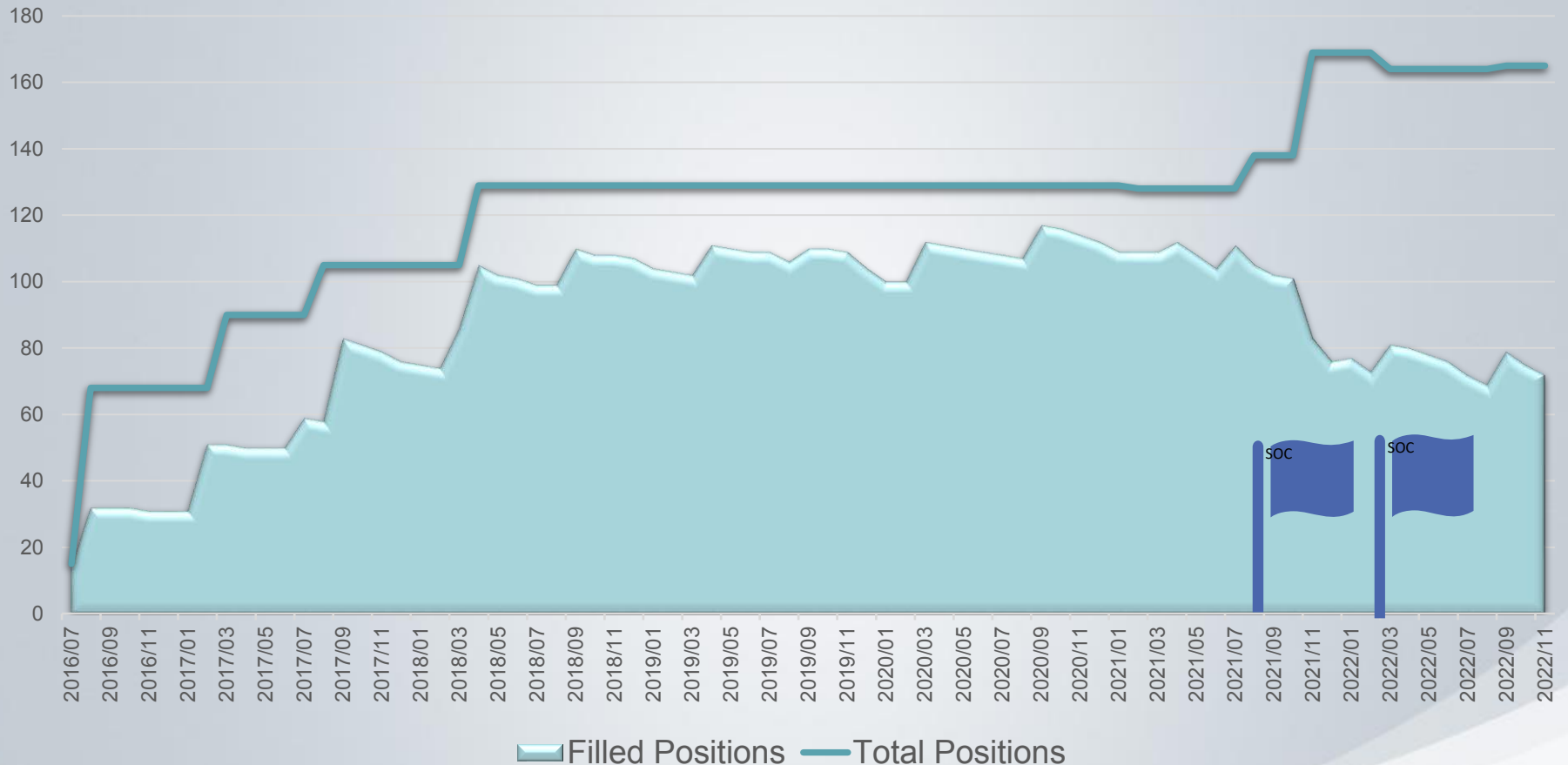
Impacts of Scheduled On-Call





# Scheduled On-Call

## SOC CP Staffing Legacy



# Future Considerations

---

- Move to stand-alone CP positions with phase-out of SOC
- Enhanced urban outreach in partnership with CP@Clinic
- Low Acuity Response strike teams in urban/metro
- Community-based training for Indigenous Nations
- Expansion of CP into other Rural and Remote Communities



Thank you

