A scenic rural landscape featuring a dirt road in the foreground, a large tree on the right, and a building in the background under a blue sky with clouds.

Interprofessional tertiary education in the rural environment as a means to enhance multidisciplinary care in future practice: Breaking down silos in health education

Krista Cockrell
Western Sydney University
@Flygirlmt

WESTERN SYDNEY
UNIVERSITY



Traditional Health Education Models

Paramedicine

Medicine

Nursing

Allied Health





Navigating Health



RIPL

Rural Inter-professional Learning

Primary focus on providing complex care in challenging environments:

- **Palliative Care**
- **Mental Health**
- **Stages of Obstetric Care**
- **Quad Bike Rollover (High acuity)**
- **Fall from Barn Loft (High acuity)**

Engage in a range of team building activities such as clinical skills presentations, interdisciplinary trivia, social dinners and more.

Method:

- **Conducted pre- and post- surveys evaluating students' perceptions of interdisciplinary care and other professional roles.**
- **Structured debrief following each simulation using SHARP debrief method.**
- **Facilitator feedback surveys to identify if learning objectives have been met, what went well, what did not, ect.**

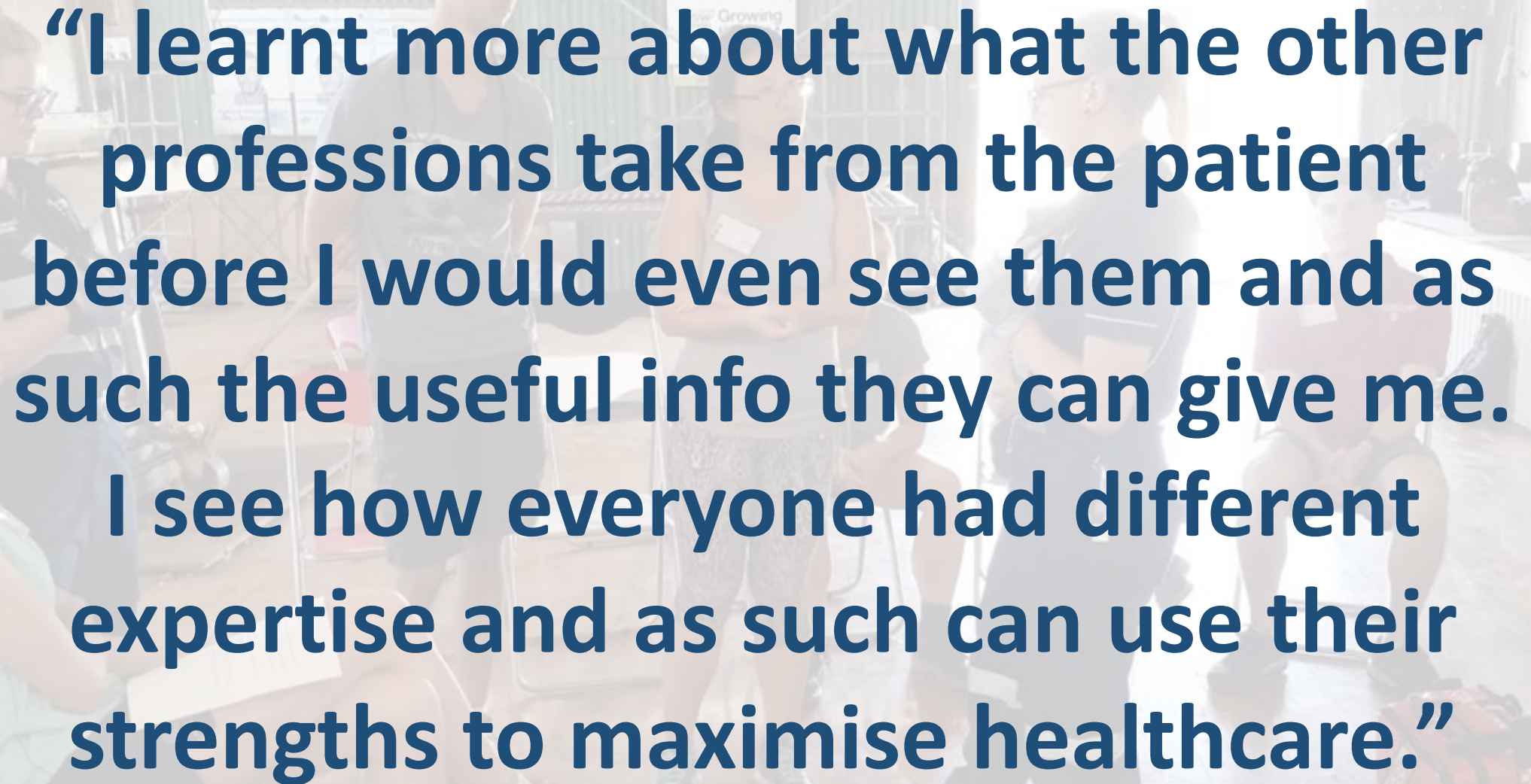
Challenges:

- **Nursing and medical professional education does not utilise simulation-based learning as a common teaching method when compared to paramedic education programs.**
- **Various levels of clinical skills among participants.**
- **We, as professionals, lack a clear understanding of each others' roles and abilities.**

Overcoming challenges:

- **Using simulation methodology as a guiding principle for simulation objectives**
 - **Focus on human interactions rather than clinical skills**
- **Embed seasoned practitioners into simulations to take the focus off of clinical skills and allow students to focus on human interactions**
- **Tabletop learning objective discussions among facilitators prior to RIPL event.**



A group of medical students in a clinical setting, possibly a hospital ward or a training room. They are gathered around a patient lying on a gurney. One student is sitting on the gurney, while others stand around, some looking at the patient and others talking. The background shows medical equipment and a sign that says "Growing".

“I learnt more about what the other professions take from the patient before I would even see them and as such the useful info they can give me. I see how everyone had different expertise and as such can use their strengths to maximise healthcare.”

-Medical Student



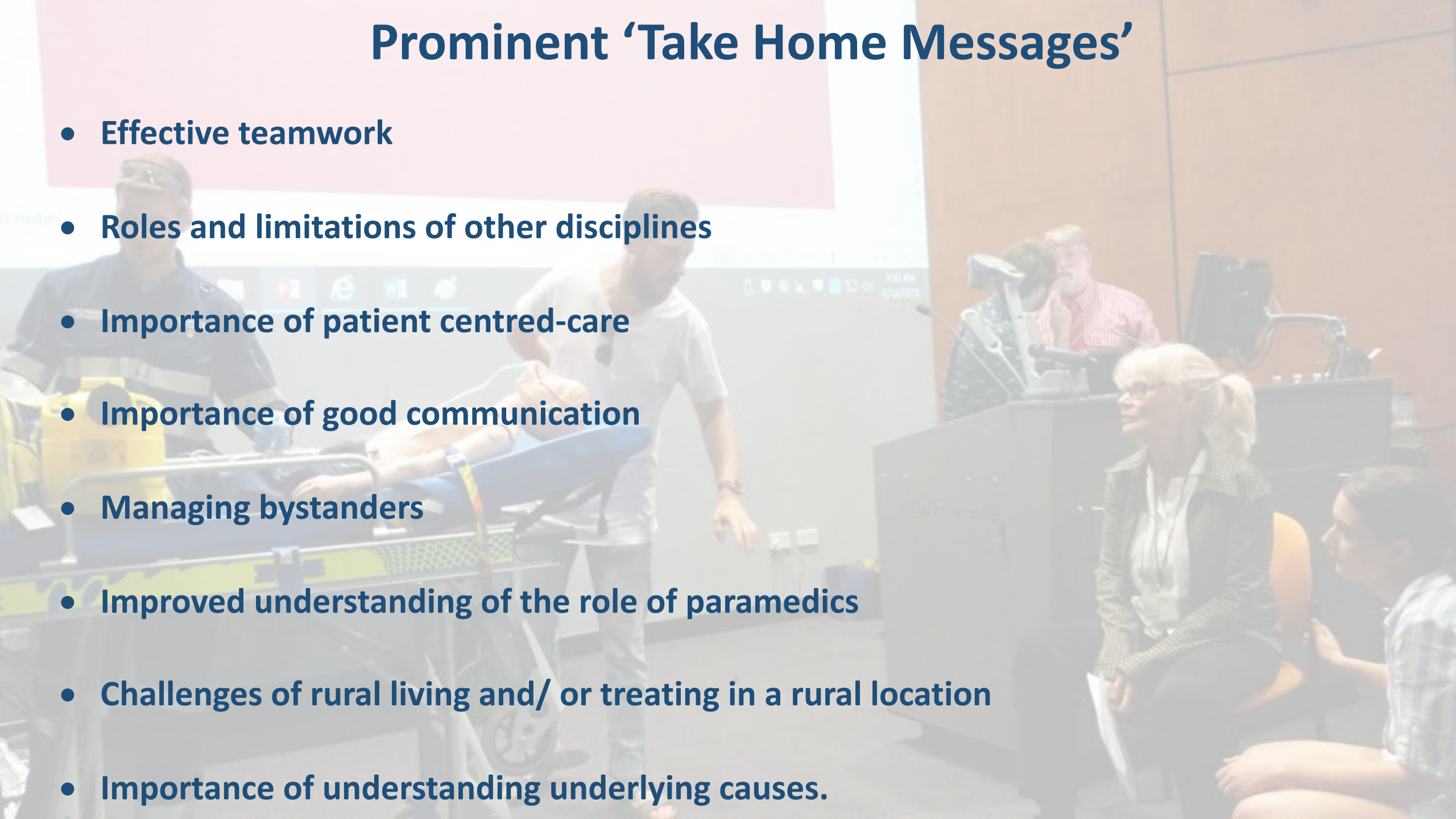
Influence on delivery of care in future practice

- **Working in multidisciplinary teams is pertinent to improving patient outcomes in a rural setting**
- **Working in multi-disciplinary teams is important for improving patient care**
 - **Each profession provides a different element of care, which may be more appropriate at different times during the patient experience.**
 - **Improved understanding of the 'layers' of care involved in the patient experience.**
- **Better understanding of how to initiate multidisciplinary teams**
- **Better understanding of social factors impacting patients' health**



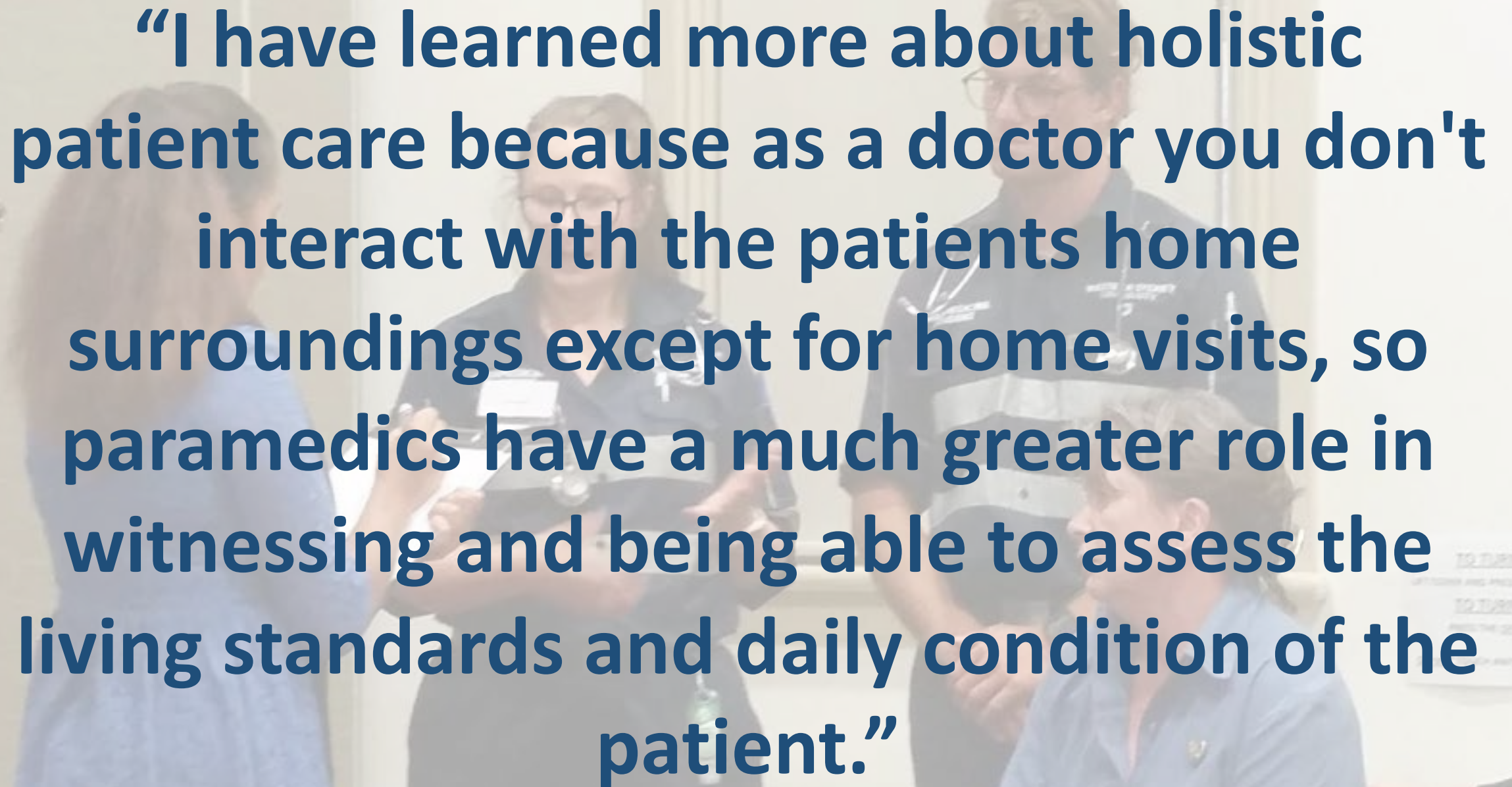
Prominent 'Take Home Messages'

- Effective teamwork
- Roles and limitations of other disciplines
- Importance of patient centred-care
- Importance of good communication
- Managing bystanders
- Improved understanding of the role of paramedics
- Challenges of rural living and/ or treating in a rural location
- Importance of understanding underlying causes.





TO TURN ON
LIFT LAMP AND PRESS THE ON
TO TURN OFF
PRESS THE OFF BUTTON
SERIES TOUCH AND OTHER

The background image shows a group of medical professionals in a clinical setting. A woman in the center, wearing glasses and a dark blue uniform, is holding a clipboard and looking down at it. To her right, a man in a dark blue uniform with a stethoscope around his neck is looking towards the camera. In the foreground, a woman in a light blue uniform is looking down. The text is overlaid on this image in a large, bold, dark blue font.

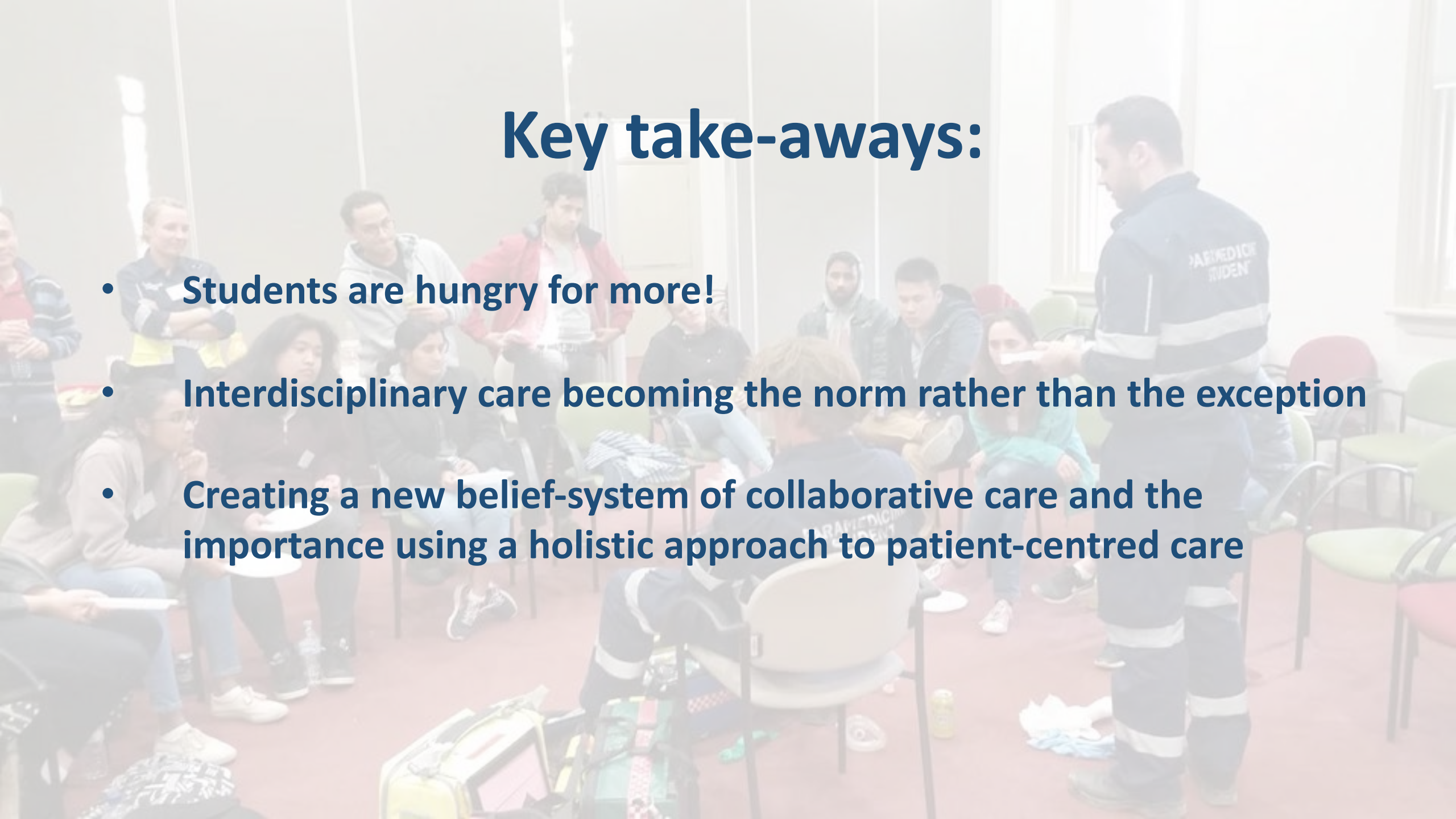
“I have learned more about holistic patient care because as a doctor you don't interact with the patients home surroundings except for home visits, so paramedics have a much greater role in witnessing and being able to assess the living standards and daily condition of the patient.”

-Medical Student



Key take-aways:

- **Students are hungry for more!**
- **Interdisciplinary care becoming the norm rather than the exception**
- **Creating a new belief-system of collaborative care and the importance using a holistic approach to patient-centred care**





WESTERN SYDNEY
UNIVERSITY

