

Malachi Winters, CCP

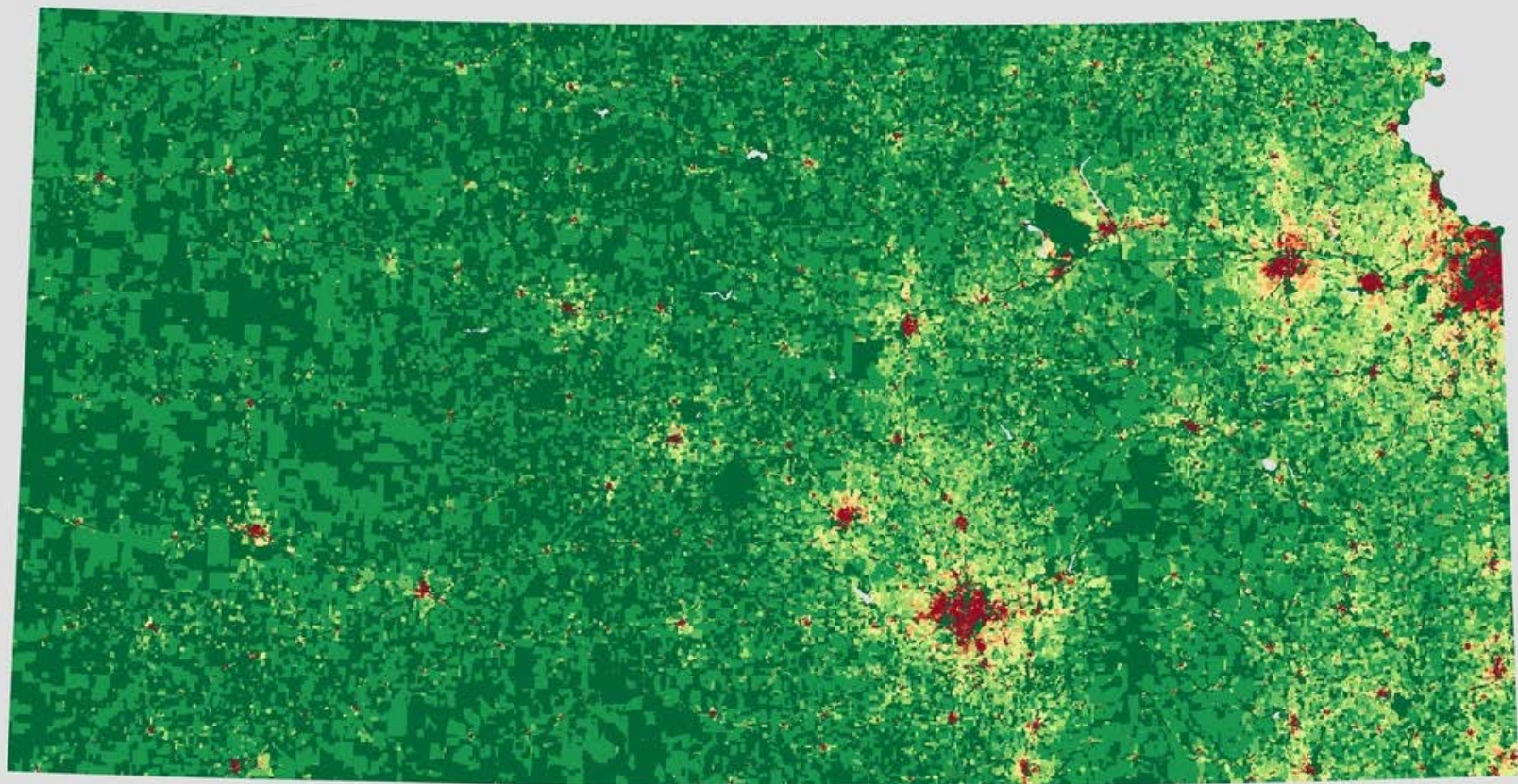
INTEGRATING SOCIAL WORK INTO COMMUNITY PARAMEDICINE

Disclosures

- ⦿ No conflicts of interest
- ⦿ Disclosure: Ascension provides funding for community paramedic program

Wichita, Kansas, USA

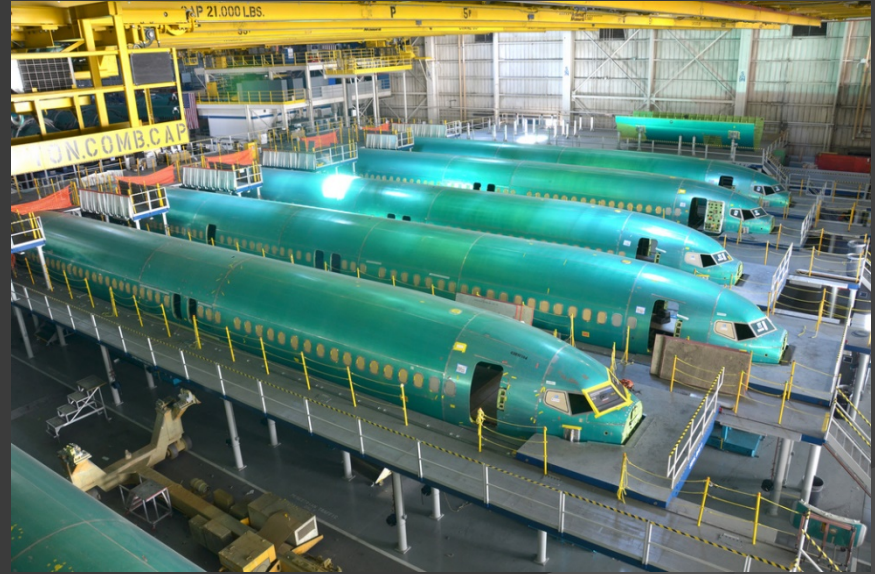




Metro area population 644,610



Large aircraft industry

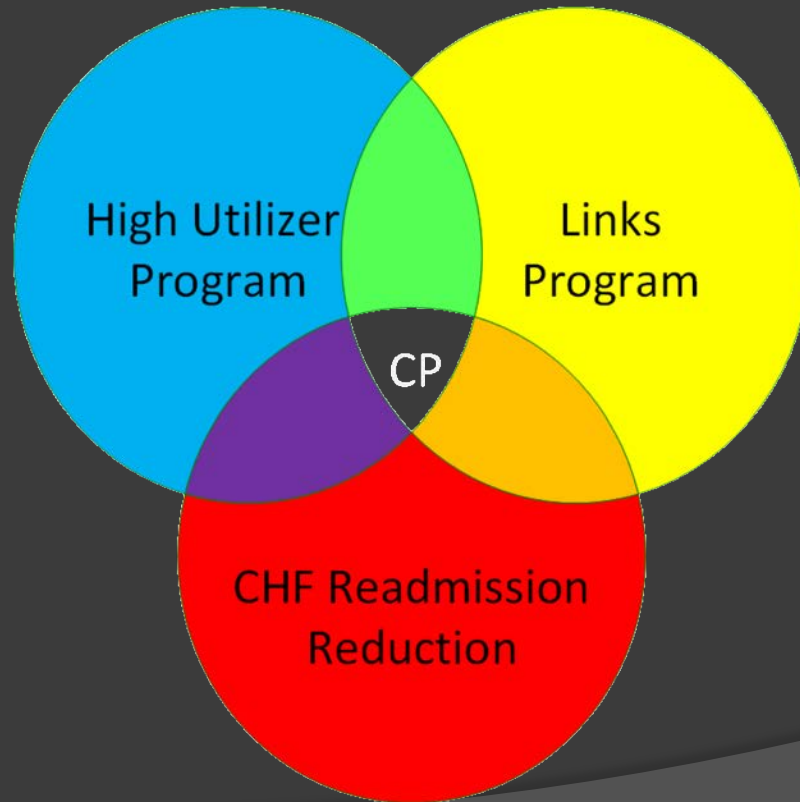




61,613 emergency calls per year



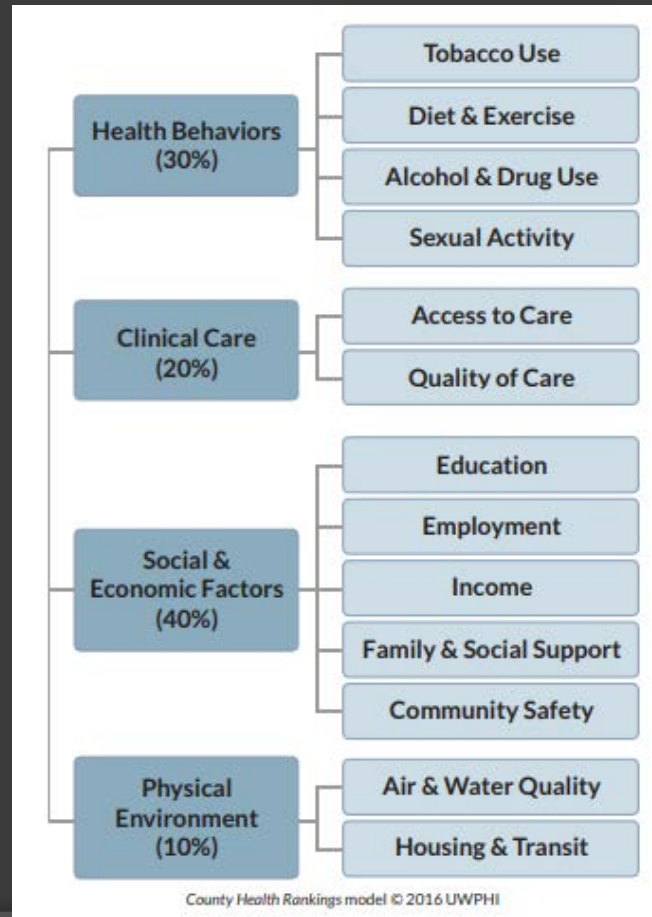
Community Paramedic Program



Social workers are an integral part
of our CP program

“Integrated social and medical services
can be 10 times more effective than
waiting for families to visit health services”
– WHO

Clinical care only accounts for 20% of healthcare.



In our urban system, the gap is not a lack of social workers, but connecting the patient to the social worker

Advantages to social workers as part of the care team

- ⦿ Higher level of training and expertise for addressing social issues
- ⦿ Larger network of resources
- ⦿ Greater support for community paramedics and nurse practitioners
- ⦿ Immediate addressing of needs when identified
- ⦿ Frees up time for medical providers

CHF Readmission Reduction Program

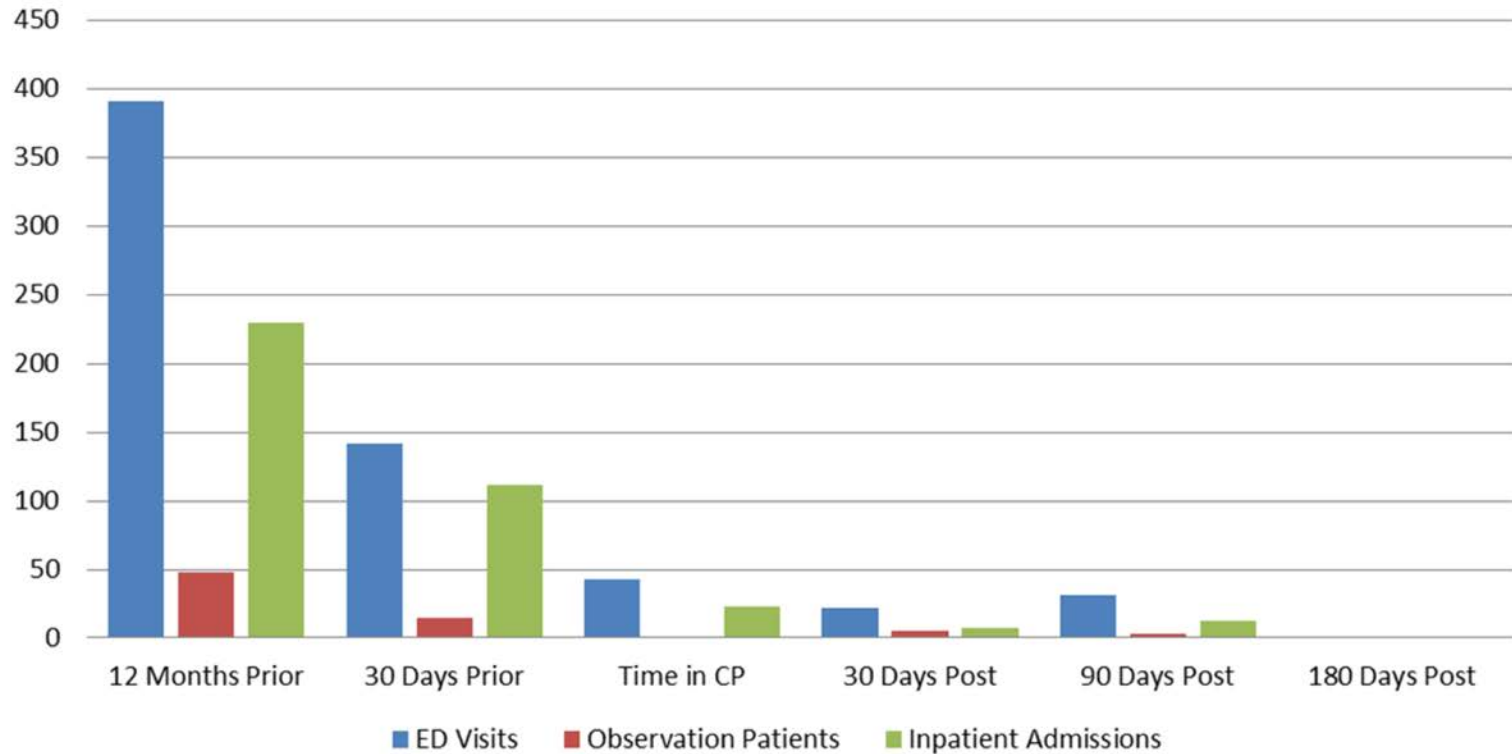


CP works with team of NPs and social workers



Community Paramedic Program

Patient Summary (Start thru January) n=109



What about those who do not
have heart failure?

Links Program



Links Program Practicum

- Masters of Social Work practicum students placed in the EMS system.
- 800+ hours over two semesters during junior or senior year.

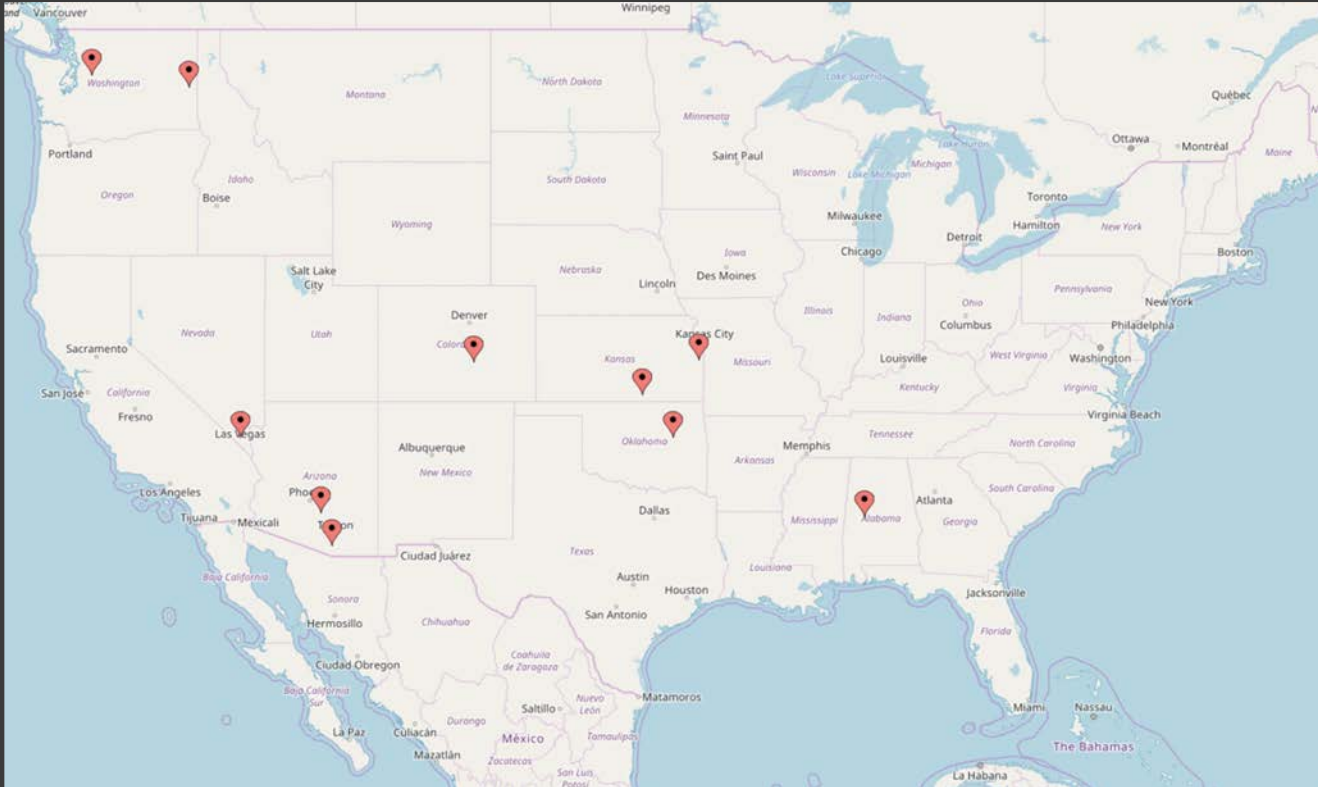


Links Program

- ⦿ Any first responder can do a referral to social services
- ⦿ Home visit with CP and interview
- ⦿ Solution focused brief therapy
- ⦿ Referrals to existing agencies

What are other agencies doing?

Creating connections collaborative



Many different models of social worker integration



Community Response Teams



Partnerships with universities



Non-profit agency that contracts services



Southern Nevada
CHIPs

Your Community Health Improvement Program

Next steps

- ② Defining key performance indicators
- ② Expand network of agencies incorporating social work

Malachi Winters, CCP

malachi.winters@sedgwick.gov

INTEGRATING SOCIAL WORK INTO COMMUNITY PARAMEDICINE