

# 15.B.7 An Integrated Approach to Interstate Community Paramedicine: Case Studies

**TJ POPP, COMMUNITY PARAMEDIC**

# Disclosures

- ▶ No conflicts of interest
- ▶ Disclosure:
  - ▶ Ascension provides funding for community paramedic program
  - ▶ Views and opinions are of the speaker, not of Sedgwick County Government

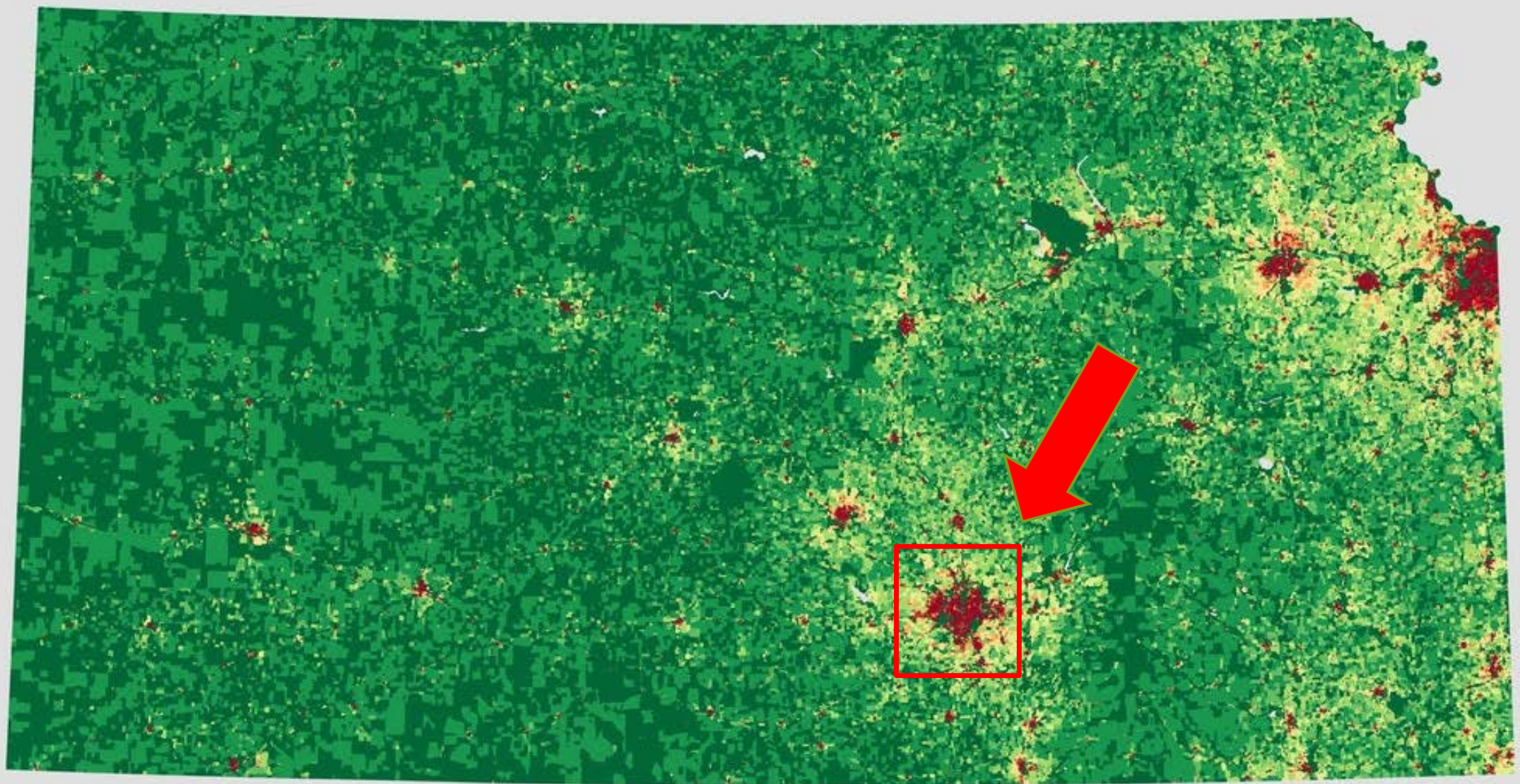
# Topics

- ▶ Brief overview of the problem
- ▶ Case study 1
- ▶ Case study 2
- ▶ Case study 3
- ▶ Final thoughts

# Wichita, Kansas, USA





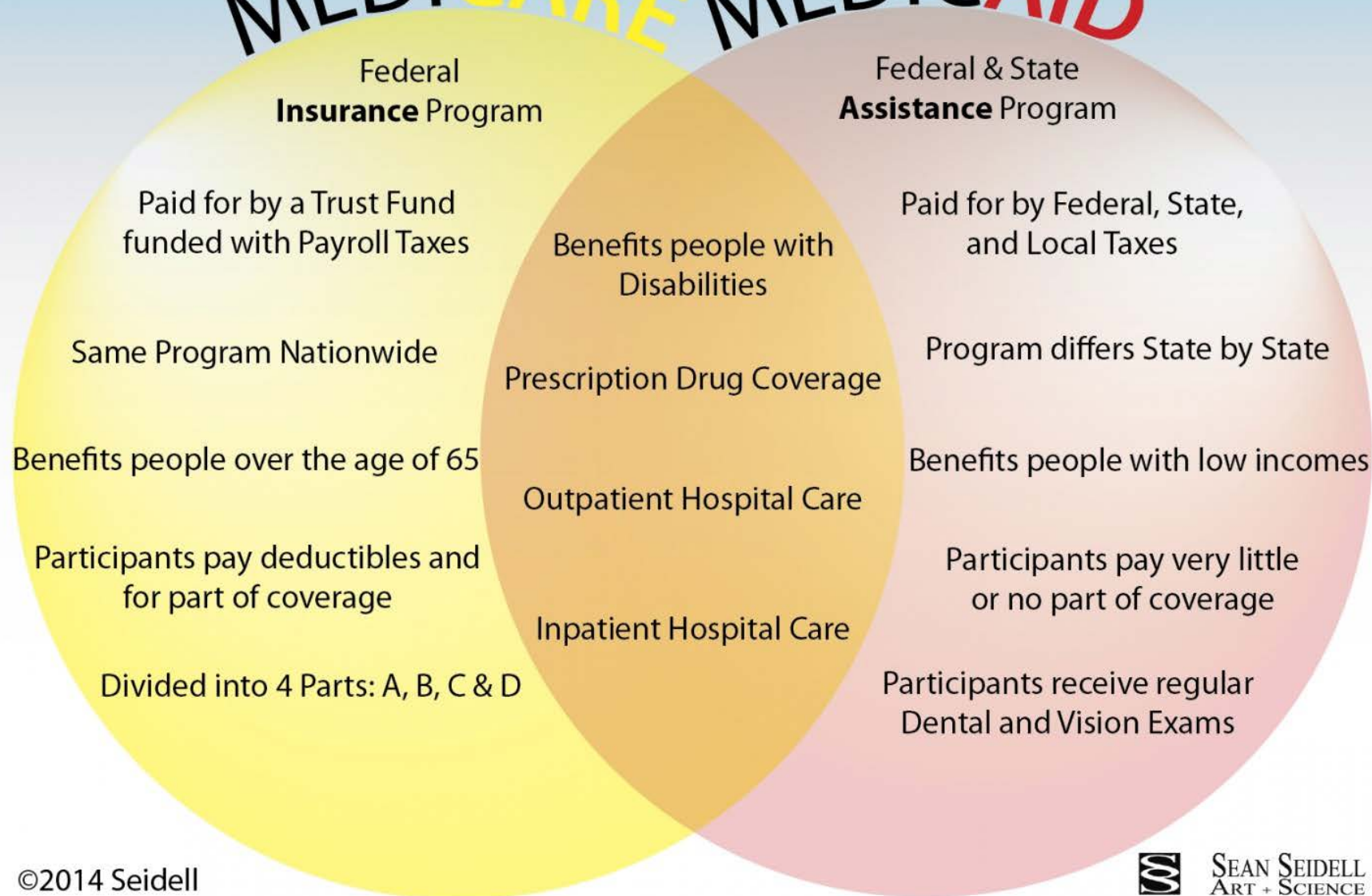




63,652 emergency calls per year



# MEDICARE MEDICAID



©2014 Seidell

Source: medicare.gov, hhs.gov, medicaid.gov, healthcare.gov



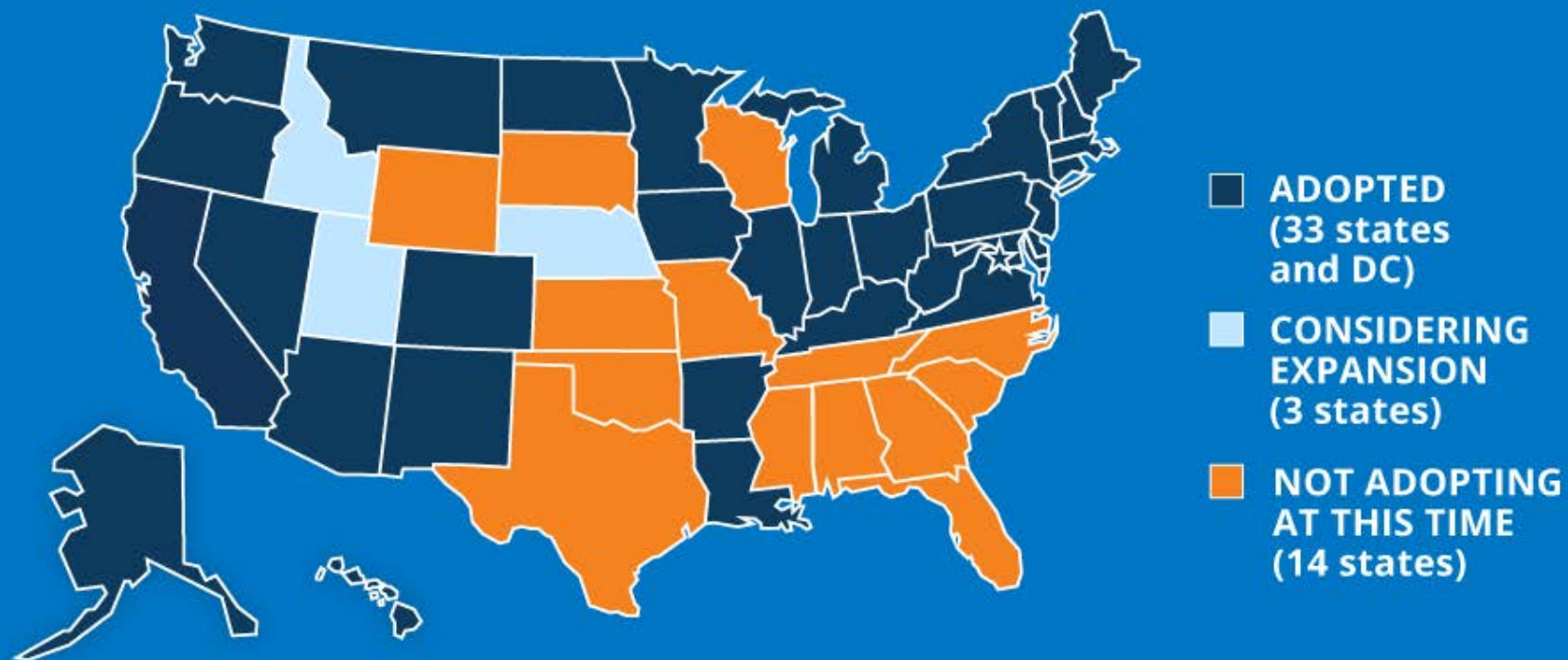
SEAN SEIDELL  
ART + SCIENCE

<http://www.seanseidell.com>



## CHART OF THE WEEK

# 33 States and DC Have Adopted Medicaid Expansion, as of May 2018



NOTE: Expansion has been adopted but not yet implemented in Maine and Virginia



# Kansas

## has not

### accepted federal Medicaid expansion

386,547

Number of people covered by  
Medicaid/CHIP as of July 2018

150,000

Number of additional people who would be  
covered if the state accepted expansion

48,000

Number of people who have NO realistic access  
to health insurance without Medicaid expansion

\$7.3 billion

Money the state is leaving on the table over  
the next decade by not expanding Medicaid

# Case Study #1

- ▶ 39 y/o female
- ▶ Lives alone in an apartment.
- ▶ Hx of Multiple Sclerosis causing her to be confined to wheelchair
- ▶ At her peak she was calling the Paramedic Service 2-3 times per day
- ▶ She did not qualify for daily home health services
- ▶ We advocated for and assisted with a Medicaid application



1



2



# Case Study #1 Solution

- ▶ Her son renovated his house in Colorado
- ▶ They bought her a plane ticket to Colorado
- ▶ We contacted that airport and made arrangements
- ▶ We drove her and her mother to the airport
- ▶ 6 months later she contacted us and had moved to an assisted living facility



## Case #2

- ▶ 70 y/o Male
- ▶ Originally from Dallas/Fort Worth area
- ▶ Hx of COPD, no primary care in Wichita
- ▶ Was visiting Wichita to see family
  - ▶ Had MI with subsequent admission and HF
  - ▶ Referred to Ascension Heart Failure Clinic
  - ▶ Frequent readmissions for COPD
  - ▶ Subsequent Community Paramedic referral





## Case Study #2 Solution

- ▶ He decided to go back "home"
- ▶ Contacted local ambulance service in Dallas, Texas inquiring about resources
- ▶ They have a robust CP program
- ▶ He took a bus back home with a care package from us

## Case #3

- ▶ 34 y/o male
- ▶ Undocumented Mexican Immigrant
- ▶ Not eligible for any services in Kansas
- ▶ Hx of quadriplegia from GSW perpetrated by girlfriend's son
- ▶ Not deported because of continued cooperation with police investigation
- ▶ Continued to reside with girlfriend, son was in jail



# Case Study #3 Neglect

- ▶ Days on end without human interaction
  - ▶ No food
  - ▶ No Foley care
  - ▶ No repositioning (left to sit in power wheelchair)
  - ▶ No utilities (heat, water, electricity)

# Case Study #3 Solution

- ▶ He was admitted for a few days
- ▶ Qualified for services where other family lived in California and Mexico
- ▶ Collaborated with several agencies for a common solution

New Flights



To Mexico



# Final Thoughts

- ▶ Continued advocacy for State Medicaid expansion
- ▶ Outreach to other programs and service areas is needed and encouraged
- ▶ Discuss the possibility of a published database including contact persons from individual Community Paramedic programs in the US

# Contact Information

- ▶ TJ Popp, Community Paramedic
- ▶ [Timothy.popp@sedgwick.gov](mailto:Timothy.popp@sedgwick.gov)
- ▶ 316-249-9226 Cell
- ▶ 316-660-7900 Office
- ▶ 1015 Stillwell, Wichita, Kansas 67213 USA